

Pantry 1-1

INTERIOR:	Melamine	3/4"	EXTERIOR:	Maple Ply	3/4"
TOP TYPE:	1-1/2" Granite Tops		THICKNESS:	0	
DOOR STYLE:	Liverpool				
DRAWER STYLE:	Slab Bullnose				
DEPTH:	18				

BODIES

- (3) 4 x 34 1/2 Nailers
- (2) 18 x 91 3/4 Wall Base Sides
- (1) 17 x 34 1/2 Fix Shelf
- (1) 17 x 34 1/2 Bottom
- (1) 17 x 34 1/2 Top
- (1) 16 5/8 x 34 1/4 Adjustable Shelf
- (1) 34 15/16 x 91 11/16 Back Panel
- (1) 2 3/4 x 34 1/2 Crown Rail

DOORS Liverpool Split PULL(S): Door Pull HINGE(S): Salice 120 clip

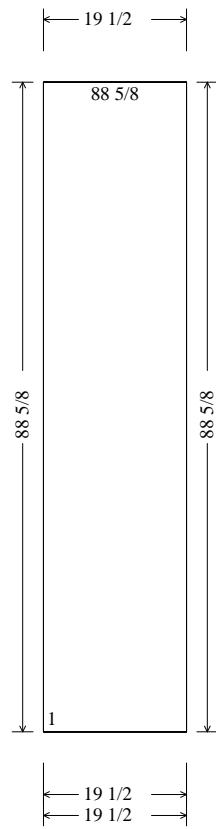
Opening #	Finished Size (WxH)	Panels (WxH)
1	2) 17 7/8 x 67 7/8	2) 17 7/8 x 67 7/8

DOORS Liverpool PULL(S): Door Pull HINGE(S): Salice 120 clip

Opening #	Finished Size (WxH)	Panels (WxH)
2	2) 17 7/8 x 21 3/8	2) 17 7/8 x 21 3/8

PULL-OUTS PULL(S): SLIDES: 16" Dynaslide

Opening #	Fronts (WxL)	Box (HxWxL)
1,2,3,4		4) 4 x 31 15/16 x 16



Pantry 1-1Left

PANEL: EXTERIOR: Maple Ply 3/4"

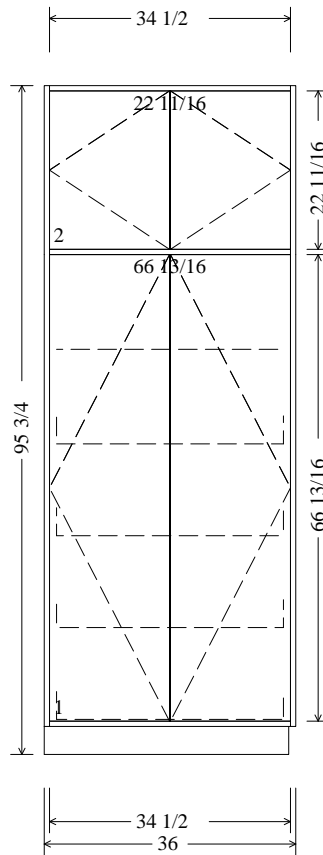
PANEL STYLE: Flat Slab Panel

END PANELS/WAINSCOT Flat Slab Panel

---

Finished Size (WxH)	Panels (WxH)
1) 19 1/2 x 88 5/8	1) 20 x 89 1/8

---



Pantry 1-2

INTERIOR: Melamine 3/4" EXTERIOR: Maple Ply 3/4"  
 TOP TYPE: 1-1/2" Granite Tops THICKNESS: 0  
 DOOR STYLE: Liverpool  
 DRAWER STYLE: Slab Bullnose  
 DEPTH: 18

BODIES

- (3) 4 x 34 1/2 Nailers
- (2) 18 x 91 3/4 Wall Base Sides
- (1) 17 x 34 1/2 Fix Shelf
- (1) 17 x 34 1/2 Bottom
- (1) 17 x 34 1/2 Top
- (1) 16 5/8 x 34 1/4 Adjustable Shelf
- (1) 34 15/16 x 91 11/16 Back Panel
- (1) 2 3/4 x 34 1/2 Crown Rail

DOORS Liverpool Split PULL(S): Door Pull HINGE(S): Salice 120 clip

Opening #	Finished Size (WxH)	Panels (WxH)
1	2) 17 7/8 x 67 7/8	2) 17 7/8 x 67 7/8

DOORS Liverpool PULL(S): Door Pull HINGE(S): Salice 120 clip

Opening #	Finished Size (WxH)	Panels (WxH)
2	2) 17 7/8 x 21 3/8	2) 17 7/8 x 21 3/8

PULL-OUTS PULL(S): SLIDES: 16" Dynaslide

Opening #	Fronts (WxL)	Box (HxWxL)
1,2,3,4		4) 4 x 31 15/16 x 16



Special Filler 1-3

INTERIOR:	Melamine	3/4"	EXTERIOR:	Maple Ply	3/4"
TOP TYPE:	1-1/2" Granite Tops		THICKNESS:	0	
DOOR STYLE:	Liverpool				
DRAWER STYLE:	Slab Bullnose				
DEPTH:	25 1/2				

BODIES

- 
- (1) 1 3/4 x 92 3/4 Filler Cleat
  - (1) 25 1/4 x 92 3/4 Finished End
  - (1) 1 1/2 x 92 3/4 Filler

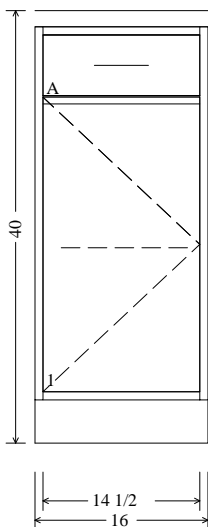


Special Filler 1-4

INTERIOR:	Melamine	3/4"	EXTERIOR:	Maple Ply	3/4"
TOP TYPE:	1-1/2" Granite Tops		THICKNESS:	0	
DOOR STYLE:	Liverpool				
DRAWER STYLE:	Slab Bullnose				
DEPTH:	25 1/2				

BODIES

- 
- (1) 1 3/4 x 92 3/4 Filler Cleat
  - (1) 25 1/4 x 92 3/4 Finished End
  - (1) 1 1/2 x 92 3/4 Filler



Base Cabinet 1-5

INTERIOR: Melamine 3/4" EXTERIOR: Maple Ply 3/4"  
 TOP TYPE: 1-1/2" Granite Tops THICKNESS: 1 1/2"  
 DOOR STYLE: Liverpool OPENING # Drawer Opening Height  
 DRAWER STYLE: Slab Bullnose A: 5 5/16  
 DEPTH: 24

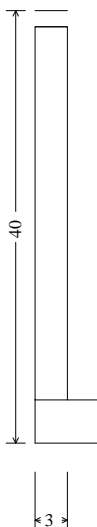
BODIES			MOUNTING HOLES				Bottom Lip	
-----			Section	#	Item Reference	Center Lines	Mounting Holes	Reference
(2)	4	x 14 1/2	Nailers					
(2)	24	x 34 1/2	Wall Base Sides					
(1)	23	x 14 1/2	Bottom					
(1)	22 5/8	x 14 1/4	Adjustable Shelf					
(1)	14 15/16	x 34 7/16	Back Panel					
(1)	4	x 14 1/2	Stretcher					
(2)	4	x 14 1/2	Top Stretchers					
				1-1	Drawer A Bottom		30 9/16 in.	7/16

DOORS Liverpool PULL(S): Door Pull HINGE(S): Salice 120 clip

Opening #	Finished Size (WxH)	Panels (WxH)
1	1) 15 3/4 x 28	1) 15 3/4 x 28

DRAWERS Slab Bullnose PULL(S): Drawer Pull SLIDES: 22" Dynaslide

Opening #	Finished Size (WxL)	Fronts (WxL)	Box (HxWxL)
A	1) 15 3/4 x 6	1) 15 3/4 x 6	1) 4 x 13 7/16 x 22



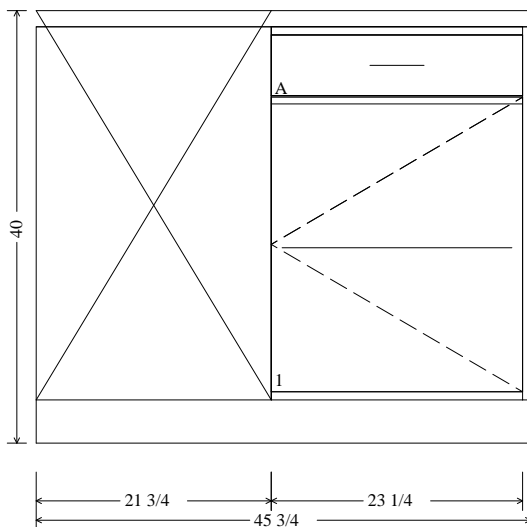
Base Filler 1-6

BASE FILLER

INTERIOR:	Melamine	3/4"	EXTERIOR:	Maple Ply	3/4"
TOP TYPE:	1-1/2" Granite Tops		THICKNESS:	1 1/2	
DOOR STYLE:	Liverpool JD				
DRAWER STYLE:	Slab Bullnose				
DEPTH:	24				

BODIES

- 
- (1) 1 3/4 x 34 1/2 Filler Cleat
  - (1) 3 x 34 1/2 Filler
  - (1) 36 x 72 Rough Top
  - (1) 24 x 96 Rough Top
  - (1) 24 x 52 1/2 Rough Top
  - (2) 24 x 43 Rough Tops
  - (1) 24 x 34 Rough Top
  - (2) 24 x 27 7/8 Rough Tops
  - (1) 22 x 94 Rough Top
  - (1) 22 x 36 Rough Top
  - (1) 21 x 96 Rough Top
  - (1) 21 x 77 Rough Top
  - (1) 21 x 34 Rough Top
  - (1) 21 x 4 1/2 Rough Top
  - (1) 18 x 44 Rough Top
  - (1) 18 x 14 Rough Top
  - (1) 11 x 44 1/2 Rough Top



Base Cabinet 1-7

INTERIOR:	Melamine	3/4"	EXTERIOR:	Maple Ply	3/4"
TOP TYPE:	1-1/2" Granite Tops		THICKNESS:	1 1/2	
DOOR STYLE:	Liverpool		OPENING #	Drawer Opening Height	
DRAWER STYLE:	Slab Bullnose		A:	5 5/16	
DEPTH:	24				

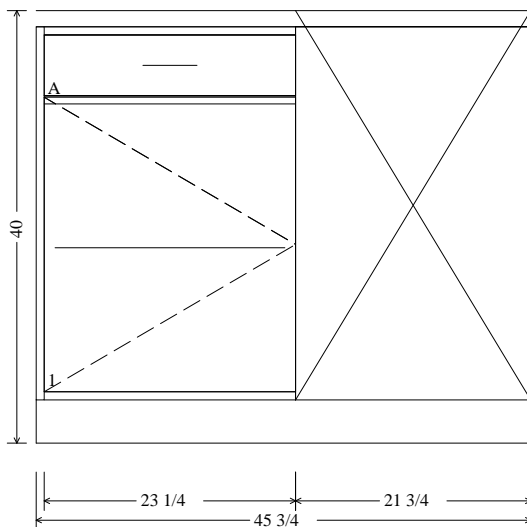
BODIES			MOUNTING HOLES					
-----			Section				Bottom Lip	
#	Size	Description	#	Item	Reference	Center Lines	Mounting Holes	Reference
-----			-----					
(2)	4 x 44 1/4	Nailers						
(2)	24 x 34 1/2	Wall Base Sides						
(1)	23 x 44 1/4	Bottom	1-1	Drawer A	Bottom		30 9/16 in.	7/16
(1)	22 1/4 x 44 1/4	Fix Shelf						
(1)	22 1/4 x 5 5/16	Partition						
(1)	21 x 33	Corner Panel						
(1)	44 11/16 x 34 7/16	Back Panel						
(1)	2 1/4 x 34 1/2	Corner Stile						
(1)	4 x 44 1/4	Stretcher						
(2)	4 x 44 1/4	Top Stretchers						

DOORS Liverpool PULL(S): Door Pull HINGE(S): Salice 120 clip

Opening #	Finished Size (WxH)	Panels (WxH)
-----		
1	1) 24 1/2 x 28	1) 24 1/2 x 28

Opening #	Finished Size (WxL)	Fronts (WxL)	Box (HxWxL)
-----			
A	1) 24 1/2 x 6	1) 24 1/2 x 6	1) 4 x 22 3/16 x 22

DRAWERS Slab Bullnose PULL(S): Drawer Pull SLIDES: 22" Dynaslide



Base Cabinet 1-8

INTERIOR: Melamine 3/4" EXTERIOR: Maple Ply 3/4"  
 TOP TYPE: 1-1/2" Granite Tops THICKNESS: 1 1/2"  
 DOOR STYLE: Liverpool OPENING # Drawer Opening Height  
 DRAWER STYLE: Slab Bullnose A: 5 5/16  
 DEPTH: 24

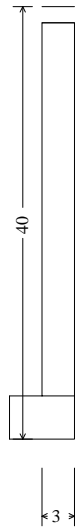
BODIES			MOUNTING HOLES				Bottom Lip	
-----			Section	#	Item Reference	Center Lines	Mounting Holes	Reference
(2)	4	x 44 1/4	Nailers					
(2)	24	x 34 1/2	Wall Base Sides					
(1)	23	x 44 1/4	Bottom	1-1	Drawer A Bottom		30 9/16 in.	7/16
(1)	22 1/4	x 44 1/4	Fix Shelf					
(1)	22 1/4	x 5 5/16	Partition					
(1)	21	x 33	Corner Panel					
(1)	44 11/16	x 34 7/16	Back Panel					
(1)	2 1/4	x 34 1/2	Corner Stile					
(1)	4	x 44 1/4	Stretcher					
(2)	4	x 44 1/4	Top Stretchers					

DOORS Liverpool PULL(S): Door Pull HINGE(S): Salice 120 clip

Opening #	Finished Size (WxH)	Panels (WxH)
1	1) 24 1/2 x 28	1) 24 1/2 x 28

DRAWERS Slab Bullnose PULL(S): Drawer Pull SLIDES: 22" Dynaslide

Opening #	Finished Size (WxL)	Fronts (WxL)	Box (HxWxL)
A	1) 24 1/2 x 6	1) 24 1/2 x 6	1) 4 x 22 3/16 x 22

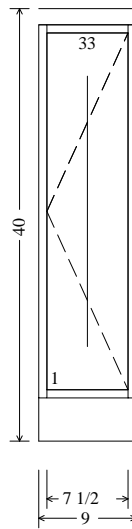


Base Filler 1-9

INTERIOR:	Melamine	3/4"	EXTERIOR:	Maple Ply	3/4"
TOP TYPE:	1-1/2" Granite Tops		THICKNESS:	1 1/2	
DOOR STYLE:	Liverpool				
DRAWER STYLE:	Slab Bullnose				
DEPTH:	24				

BODIES

- 
- (1) 1 3/4 x 34 1/2 Filler Cleat
  - (1) 3 x 34 1/2 Filler



Base Cabinet 1-10

INTERIOR:	Melamine	3/4"	EXTERIOR:	Maple Ply	3/4"
TOP TYPE:	1-1/2" Granite Tops		THICKNESS:	1 1/2	
DOOR STYLE:	Liverpool				
DRAWER STYLE:	Slab Bullnose				
DEPTH:	24				

BODIES

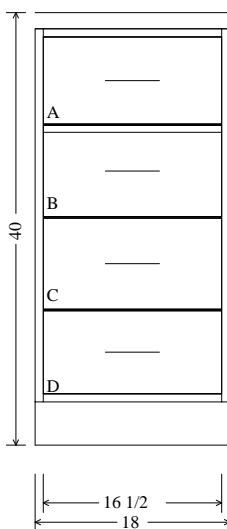
- 
- (1) 23 x 33 1/4 Vert Divider
  - (2) 4 x 7 1/2 Nailers
  - (2) 24 x 34 1/2 Wall Base Sides
  - (1) 23 x 7 1/2 Bottom
  - (1) 7 15/16 x 34 7/16 Back Panel
  - (2) 4 x 7 1/2 Top Stretchers

DOORS Liverpool PULL(S): Door Pull HINGE(S): Salice 120 clip

---

Opening #	Finished Size (WxH)	Panels (WxH)
1	1) 8 13/16 x 34 1/8	1) 8 13/16 x 34 1/8

---



Base Cabinet 1-11

INTERIOR: Melamine 3/4" EXTERIOR: Maple Ply 3/4"  
 TOP TYPE: 1-1/2" Granite Tops THICKNESS: 1 1/2"  
 DOOR STYLE: Liverpool OPENING # Drawer Opening Height  
 DRAWER STYLE: Slab Bullnose A: 7 3/4"  
 DEPTH: 24 B: 7 13/16"  
 C: 7 13/16"  
 D: 7 3/8"

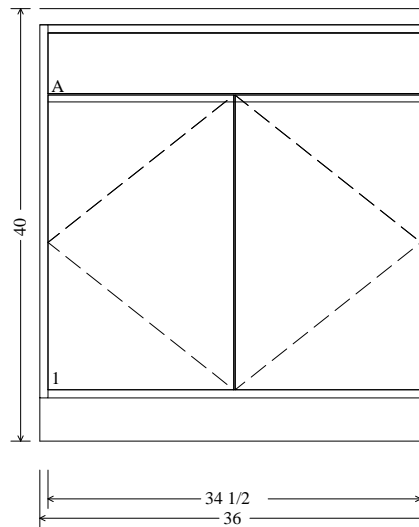
BODIES

MOUNTING HOLES

BODIES			MOUNTING HOLES				Bottom Lip		
-----			Section	#	Item	Reference	Center Lines	Mounting Holes	Reference
(2)	4	x 16 1/2	Nailers						
(2)	24	x 34 1/2	Wall Base Sides						
(1)	23	x 16 1/2	Bottom	1-1	Drawer A	Bottom		28 1/8 in.	7/16
(1)	16 15/16	x 34 7/16	Back Panel	1-1	Drawer B	Bottom		19 9/16 in.	7/16
(3)	4	x 16 1/2	Stretchers	1-1	Drawer C	Bottom		11 in.	7/16
(2)	4	x 16 1/2	Top Stretchers	1-1	Drawer D	Bottom		2 7/8 in.	7/8

DRAWERS Slab Bullnose PULL(S): Drawer Pull SLIDES: 22" Dynaslide

Opening #	Finished Size (WxL)		Fronts (WxL)		Box (HxWxL)		
A,B,C	3)	17 7/8 x 8 7/16	3)	17 7/8 x 8 7/16	3)	7	x 15 7/16 x 22
D	1)	17 7/8 x 8 7/16	1)	17 7/8 x 8 7/16	1)	6	x 15 7/16 x 22



Base Cabinet 1-12

INTERIOR:	Melamine	3/4"	EXTERIOR:	Maple Ply	3/4"
TOP TYPE:	1-1/2" Granite Tops		THICKNESS:	1 1/2	
DOOR STYLE:	Liverpool		OPENING #	Drawer Opening Height	
DRAWER STYLE:	Slab Bullnose		A:	5 5/16	
DEPTH:	24				

BODIES

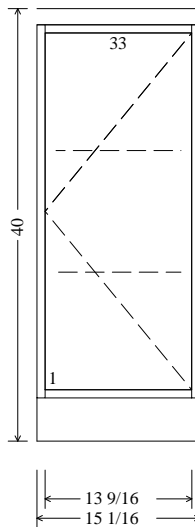
- (2) 4 x 34 1/2 Nailers
- (2) 24 x 34 1/2 Wall Base Sides
- (1) 23 x 34 1/2 Bottom
- (1) 6 13/16 x 34 1/2 FF Backer
- (1) 34 15/16 x 34 7/16 Back Panel

DOORS Liverpool PULL(S): Door Pull HINGE(S): Salice 120 clip

Opening #	Finished Size (WxH)	Panels (WxH)
1	2) 17 7/8 x 28	2) 17 7/8 x 28

DRAWERS Slab Bullnose PULL(S): Drawer Pull SLIDES:

Opening #	Finished Size (WxL)	Fronts (WxL)	Sides (WxL)	Ends (WxL)	Bottoms (WxL)
A	1) 35 13/16 x 6	1) 35 13/16 x 6			



Base Cabinet 1-13

BASE

Right Angle 22.5 deg.

INTERIOR: Melamine 3/4"  
 TOP TYPE: 1-1/2" Granite Tops  
 DOOR STYLE: Liverpool JD  
 DRAWER STYLE: Slab Bullnose  
 DEPTH: 24

EXTERIOR: Maple Ply 3/4"  
 THICKNESS: 1 1/2

BODIES

- \* (2) 4 x 3 9/16 Nailers
- \* (1) 26 5/16 x 34 1/2 Wall Base Side
- (1) 24 x 34 1/2 Wall Base Side
- (1) 23 x 13 1/2 Top
- (1) 23 x 13 1/2 Bottom
- \* (2) 22 5/8 x 13 1/8 Adjustable Shelves
- \* (1) 4 9/16 x 34 1/2 Back Panel

DOORS Liverpool JD PULL(S): Door Pull HINGE(S): Salice 120 clip

Opening #	Finished Size (WxH)	Panels (WxH)
1	1) 14 7/8 x 34 1/8	1) 14 7/8 x 34 1/8



Base Filler 1-14

INTERIOR:	Melamine	3/4"	Right Angle 22.5 deg.	
TOP TYPE:	1-1/2" Granite Tops		EXTERIOR:	Maple Ply
DOOR STYLE:	Liverpool		THICKNESS:	1 1/2
DRAWER STYLE:	Slab Bullnose			
DEPTH:	24			

BODIES

- 
- \* (1) 1 3/4 x 34 1/2 Filler Cleat
  - \* (1) 1 x 34 1/2 Filler

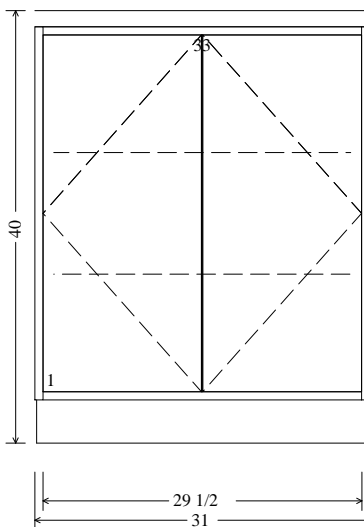


Base Filler 1-15

INTERIOR:	Melamine	3/4"	Left Angle 22.5 deg.	EXTERIOR:	Maple Ply	3/4"
TOP TYPE:	1-1/2" Granite Tops			THICKNESS:	1 1/2	
DOOR STYLE:	Liverpool					
DRAWER STYLE:	Slab Bullnose					
DEPTH:	24					

BODIES

- 
- \* (1) 1 3/4 x 34 1/2 Filler Cleat
  - \* (1) 1 x 34 1/2 Filler



Base Cabinet 1-16

BASE

Left Angle 22.5 deg.

INTERIOR: Melamine 3/4"

EXTERIOR: Maple Ply

3/4"

TOP TYPE: 1-1/2" Granite Tops

THICKNESS: 1 1/2

DOOR STYLE: Liverpool JD

DRAWER STYLE: Slab Bullnose

DEPTH: 24

BODIES

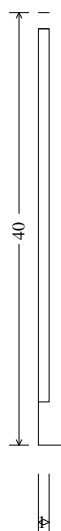
- \* (2) 4 x 19 1/2 Nailers
- \* (1) 26 5/16 x 34 1/2 Wall Base Side
- (1) 24 x 34 1/2 Wall Base Side
- (1) 23 x 29 7/16 Top
- (1) 23 x 29 7/16 Bottom
- \* (2) 22 5/8 x 29 1/16 Adjustable Shelves
- \* (1) 20 1/2 x 34 1/2 Back Panel

DOORS Liverpool JD

PULL(S): Door Pull

HINGE(S): Salice 120 clip

Opening #	Finished Size (WxH)	Panels (WxH)
1	2) 15 5/16 x 34 1/8	2) 15 5/16 x 34 1/8



Base Filler 1-17

INTERIOR:	Melamine	3/4"	Right Angle -22.5 deg.	
TOP TYPE:	1-1/2" Granite Tops		EXTERIOR:	Maple Ply
DOOR STYLE:	Liverpool		THICKNESS:	1 1/2
DRAWER STYLE:	Slab Bullnose			
DEPTH:	24			

BODIES

- 
- \* (1) 1 3/4 x 34 1/2 Filler Cleat
  - \* (1) 1 5/16 x 34 1/2 Filler

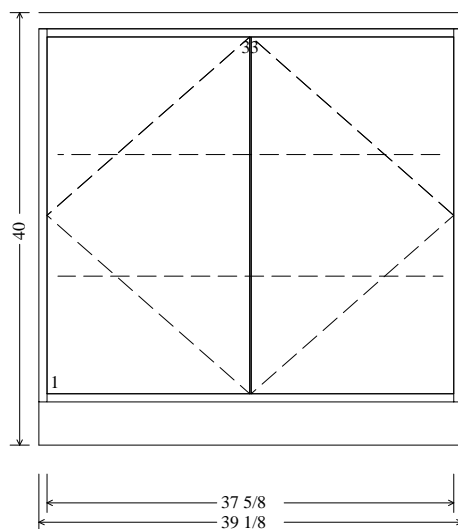


Base Filler 1-18

INTERIOR:	Melamine	3/4"	Left Angle -22.5 deg.	
TOP TYPE:	1-1/2" Granite Tops		EXTERIOR:	Maple Ply
DOOR STYLE:	Liverpool		THICKNESS:	1 1/2
DRAWER STYLE:	Slab Bullnose			
DEPTH:	24			

BODIES

- 
- \* (1) 1 3/4 x 34 1/2 Filler Cleat
  - \* (1) 1 5/16 x 34 1/2 Filler



Base Cabinet 1-19

INTERIOR:	Melamine	3/4"	EXTERIOR:	Maple Ply	3/4"
TOP TYPE:	1-1/2" Granite Tops		THICKNESS:	1 1/2	
DOOR STYLE:	Liverpool				
DRAWER STYLE:	Slab Bullnose				
DEPTH:	24				

BODIES

- 
- (2) 4 x 37 5/8 Nailers
  - (2) 24 x 34 1/2 Wall Base Sides
  - (1) 23 x 37 5/8 Bottom
  - (2) 22 5/8 x 37 3/8 Adjustable Shelves
  - (1) 38 1/16 x 34 7/16 Back Panel
  - (2) 4 x 37 5/8 Top Stretchers

DOORS Liverpool PULL(S): Door Pull HINGE(S): Salice 120 clip

---

Opening #	Finished Size (WxH)	Panels (WxH)
1	2) 19 7/16 x 34 1/8	2) 19 7/16 x 34 1/8

---



Base Filler 1-20

INTERIOR:	Melamine	3/4"	Right Angle -22.5 deg.	
TOP TYPE:	1-1/2" Granite Tops		EXTERIOR:	Maple Ply
DOOR STYLE:	Liverpool		THICKNESS:	1 1/2
DRAWER STYLE:	Slab Bullnose			
DEPTH:	24			

BODIES

- 
- \* (1) 1 3/4 x 34 1/2 Filler Cleat
  - \* (1) 1 1/16 x 34 1/2 Filler

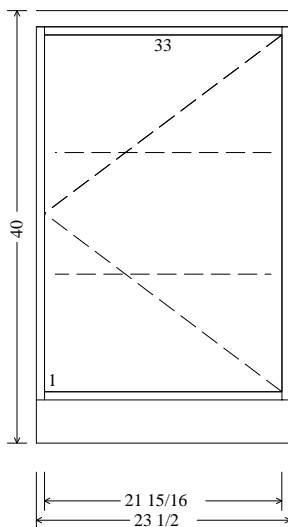


Base Filler 1-21

INTERIOR:	Melamine	3/4"	Left Angle -22.5 deg.	
TOP TYPE:	1-1/2" Granite Tops		EXTERIOR:	Maple Ply
DOOR STYLE:	Liverpool		THICKNESS:	1 1/2
DRAWER STYLE:	Slab Bullnose			
DEPTH:	18			

BODIES

- 
- \* (1) 1 3/4 x 34 1/2 Filler Cleat
  - \* (1) 1 11/16 x 34 1/2 Filler



Base Cabinet 1-22

BASE

Right Angle 22.5 deg.

INTERIOR: Melamine 3/4"  
 TOP TYPE: 1-1/2" Granite Tops  
 DOOR STYLE: Liverpool JD  
 DRAWER STYLE: Slab Bullnose  
 DEPTH: 18

EXTERIOR: Maple Ply 3/4"  
 THICKNESS: 1 1/2"

BODIES

- \* (2) 4 x 14 1/2 Nailers
- \* (1) 19 13/16 x 34 1/2 Wall Base Side
- (1) 18 x 34 1/2 Wall Base Side
- (1) 17 x 21 15/16 Top
- (1) 17 x 21 15/16 Bottom
- \* (2) 16 5/8 x 21 9/16 Adjustable Shelves
- \* (1) 15 1/2 x 34 1/2 Back Panel

DOORS Liverpool JD

PULL(S): Door Pull

HINGE(S): Salice 120 clip

Opening #	Finished Size (WxH)	Panels (WxH)
1	1) 23 1/4 x 34 1/8	1) 23 1/4 x 34 1/8



Base Filler 1-23

INTERIOR:	Melamine	3/4"	Right Angle 22.5 deg.	
TOP TYPE:	1-1/2" Granite Tops		EXTERIOR:	Maple Ply
DOOR STYLE:	Liverpool		THICKNESS:	1 1/2
DRAWER STYLE:	Slab Bullnose			
DEPTH:	18			

BODIES

- 
- \* (1) 1 3/4 x 34 1/2 Filler Cleat
  - \* (1) 1 x 34 1/2 Filler

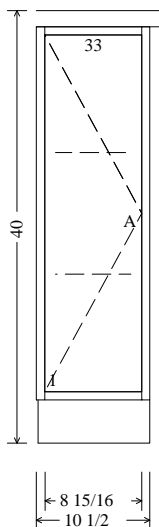


Base Filler 1-24

INTERIOR:	Melamine	3/4"	Left Angle 22.5 deg.	
TOP TYPE:	1-1/2" Granite Tops		EXTERIOR:	Maple Ply
DOOR STYLE:	Liverpool		THICKNESS:	1 1/2
DRAWER STYLE:	Slab Bullnose			
DEPTH:	18			

BODIES

- 
- \* (1) 1 3/4 x 34 1/2 Filler Cleat
  - \* (1) 1 x 34 1/2 Filler



Base Cabinet 1-25

BASE  
 Left Angle 22.5 deg.

INTERIOR: Melamine 3/4"  
 TOP TYPE: 1-1/2" Granite Tops  
 DOOR STYLE: Liverpool JD  
 DRAWER STYLE: Slab Bullnose  
 DEPTH: 18

EXTERIOR: Maple Ply 3/4"  
 THICKNESS: 1 1/2

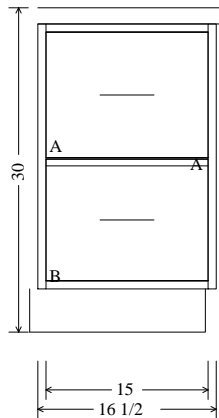
BODIES

- \* (2) 4 x 1 1/2 Nailers
- \* (1) 19 13/16 x 34 1/2 Wall Base Side
- (1) 18 x 34 1/2 Wall Base Side
- (1) 17 x 8 15/16 Top
- (1) 17 x 8 15/16 Bottom
- \* (2) 16 5/8 x 8 9/16 Adjustable Shelves
- \* (1) 2 7/16 x 34 1/2 Back Panel

DOORS Liverpool JD PULL(S): Door Pull HINGE(S): Salice 120 clip

Opening #	Finished Size (WxH)	Panels (WxH)
1	1) 10 1/4 x 34 1/8	1) 10 1/4 x 34 1/8





Base Cabinet 1-26

INTERIOR:	Melamine	3/4"	EXTERIOR:	Maple Ply	3/4"
TOP TYPE:	1-1/2" Granite Tops		THICKNESS:	1 1/2	
DOOR STYLE:	Liverpool		OPENING #	Drawer Opening Height	
DRAWER STYLE:	Liverpool 5 Pc 2.5" Rail		A:	11 5/16	
DEPTH:	17		B:	10 15/16	

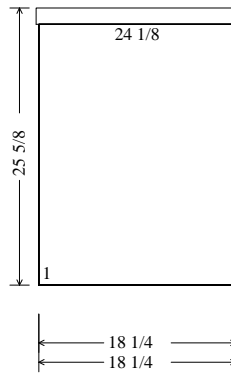
BODIES

MOUNTING HOLES

-----			Section				Bottom Lip	
			#	Item	Reference	Center Lines	Mounting Holes	Reference
-----								
(2)	4	x 15		Nailers				
(2)	17	x 24 1/2		Wall Base Sides				
(1)	16	x 15		Bottom				
(1)	15 7/16	x 24 7/16		Back Panel				
(1)	4	x 15		Stretcher				
(2)	4	x 15		Top Stretchers				
			1-1	Drawer A	Bottom		14 9/16 in.	7/16
			1-1	Drawer B	Bottom		2 7/8 in.	7/8

DRAWERS Liverpool 5 Pc 2.5" Rail PULL(S): Drawer Pull SLIDES: 14" Dynaslide

Opening #	Finished Size (WxL)	Fronts (WxL)	Box (HxWxL)
-----			
A,B	2) 12 x 16 1/4	2) 12 x 16 1/4	2) 10 x 13 15/16 x 14



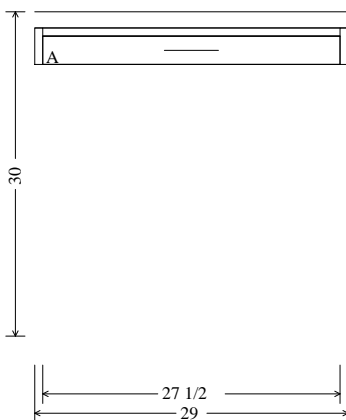
Base Cabinet 1-26Right

PANEL: EXTERIOR: Maple Ply 3/4"

PANEL STYLE: Oslo

END PANELS/WAINSCOT Oslo

Finished Size (WxH)	Panels (WxH)
1) 18 1/4 x 24 1/8	1) 18 1/4 x 24 1/8



Base Cabinet 1-27

BASE

INTERIOR:	Melamine	3/4"	EXTERIOR:	Maple Ply	3/4"
TOP TYPE:	1-1/2" Granite Tops		THICKNESS:	1 1/2	
DOOR STYLE:	Liverpool JD		OPENING #	Drawer Opening Height	
DRAWER STYLE:	Slab Bullnose		A:	2 5/8	
DEPTH:	17				

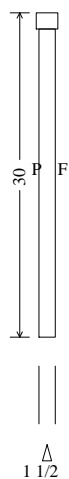
BODIES

MOUNTING HOLES

-----			Section	Bottom Lip
(1)	x	Nailers	#	Item Reference Center Lines Mounting Holes Reference
(1)	3 3/8	x 27 1/2		
(2)	17	x 3 3/8		
(2)	4	x 27 1/2	1-1	Drawer A Bottom 2 1/4 in. 1/4

DRAWERS Slab Bullnose PULL(S): Drawer Pull SLIDES: 14" Dynaslide

Opening #	Finished Size (WxL)	Fronts (WxL)	Box (HxWxL)
A	1) 28 3/4 x 3	1) 28 3/4 x 3	1) 2 x 26 7/16 x 14



Base Filler 1-28

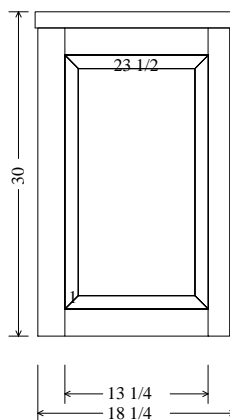
BASE FILLER

INTERIOR: Melamine 3/4"  
 TOP TYPE: 1-1/2" Granite Tops  
 DOOR STYLE: Liverpool JD  
 DRAWER STYLE: Slab Bullnose  
 DEPTH: 17 3/4

EXTERIOR: Maple Ply 3/4"  
 THICKNESS: 1 1/2

BODIES

- 
- (1) 1 3/4 x 28 1/2 Filler Cleat
  - (1) 17 x 28 1/2 Finished End
  - (1) 1 1/2 x 28 1/2 Filler



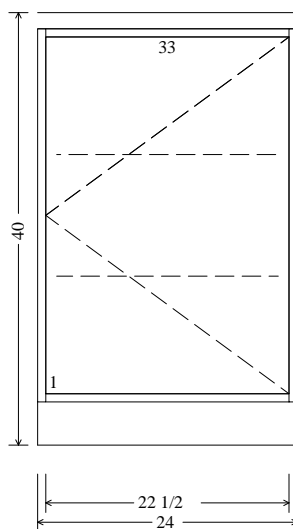
Base Cabinet 1-28Right

PANEL: EXTERIOR: Maple Ply 3/4"

PANEL STYLE: Liverpool End Panel

END PANELS/WAINSCOT Liverpool End Panel

Finished Size (WxH)	Panels (WxH)
1) 18 1/4 x 28 1/2	1) 18 1/4 x 28 1/2



Base Cabinet 1-29

BASE

INTERIOR:	Melamine	3/4"	EXTERIOR:	Maple Ply	3/4"
TOP TYPE:	1-1/2" Granite Tops		THICKNESS:	1 1/2	
DOOR STYLE:	Liverpool JD				
DRAWER STYLE:	Slab Bullnose				
DEPTH:	12				

BODIES

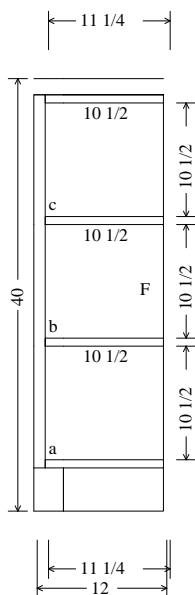
- 
- (2) 4 x 22 1/2 Nailers
  - (2) 12 x 34 1/2 Wall Base Sides
  - (1) 11 x 22 1/2 Bottom
  - (2) 10 5/8 x 22 1/4 Adjustable Shelves
  - (1) 23 x 34 1/2 Back Panel
  - (2) 3 x 24 Corner Top Rails
  - (2) 4 x 22 1/2 Top Stretchers

DOORS Liverpool JD PULL(S): Door Pull HINGE(S): Salice 120 clip

---

Opening #	Finished Size (WxH)	Panels (WxH)
1	1) 23 7/8 x 34 1/8	1) 23 7/8 x 34 1/8

---



Base Cabinet 1-30

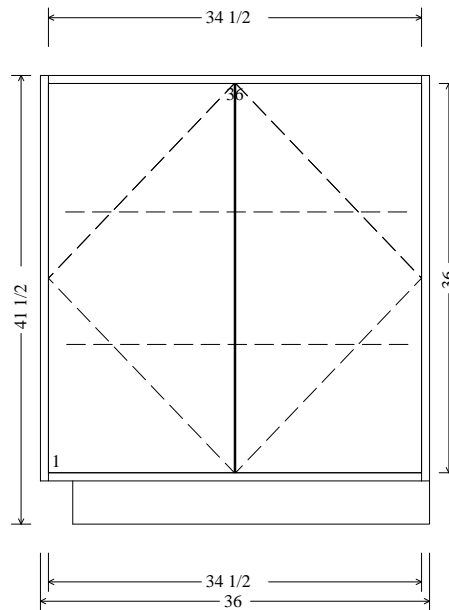
ENDCABINET BASE  
 Right Clip 45.0 deg. depth 2.75  
 EXTERIOR: Maple Ply  
 THICKNESS: 1 1/2

INTERIOR: Maple Ply 3/4"  
 TOP TYPE: 1-1/2" Granite Tops  
 DOOR STYLE: Liverpool JD  
 DRAWER STYLE: Slab Bullnose  
 DEPTH: 12

3/4"

BODIES

- 
- (1) 12 x 34 1/2 Wall Base Side
  - \* (1) 11 1/4 x 34 1/2 Finished End
  - (2) 11 1/4 x 11 1/4 Horiz Partitions
  - (1) 11 1/4 x 11 1/4 Bottom
  - (1) 11 1/4 x 11 1/4 Top Stretcher



Special 1-31

INTERIOR:	Melamine	3/4"	EXTERIOR:	Maple Ply	3/4"
TOP TYPE:	1-1/2" Granite Tops		THICKNESS:	0	
DOOR STYLE:	Liverpool				
DRAWER STYLE:	Slab Bullnose				
DEPTH:	12				

BODIES

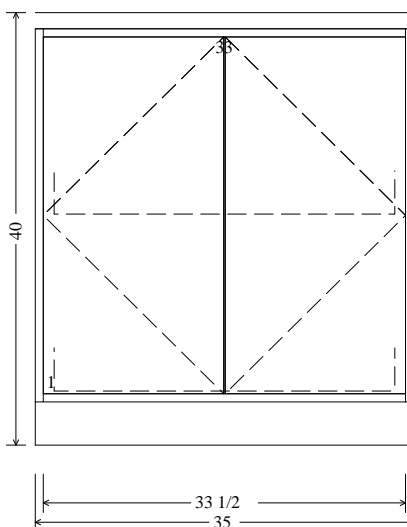
- 
- (2) 4 x 34 1/2 Nailers
  - (2) 12 x 37 1/2 Wall Base Sides
  - (1) 11 x 34 1/2 Bottom
  - (1) 11 x 34 1/2 Top
  - (2) 10 5/8 x 34 1/4 Adjustable Shelves
  - (1) 34 15/16 x 37 7/16 Back Panel
  - (1) 2 3/4 x 34 1/2 Crown Rail

DOORS Liverpool PULL(S): Door Pull HINGE(S): Salice 120 clip

---

Opening #	Finished Size (WxH)	Panels (WxH)
1	2) 17 13/16 x 37 1/8	2) 17 13/16 x 37 1/8

---



Base Cabinet 1-32

INTERIOR:	Melamine	3/4"	EXTERIOR:	Maple Ply	3/4"
TOP TYPE:	1-1/2" Granite Tops		THICKNESS:	1 1/2	
DOOR STYLE:	Liverpool				
DRAWER STYLE:	Slab Bullnose				
DEPTH:	36				

BODIES

- (2) 4 x 33 1/2 Nailers
- (2) 36 x 34 1/2 Wall Base Sides
- (1) 35 x 33 1/2 Bottom
- (1) 33 15/16x 34 7/16 Back Panel
- (2) 4 x 33 1/2 Top Stretchers

DOORS Liverpool PULL(S): Door Pull HINGE(S): Salice 120 clip

Opening #	Finished Size (WxH)	Panels (WxH)
2)	17 3/8 x 34 1/8	2) 17 3/8 x 34 1/8

PULL-OUTS PULL(S): SLIDES: 28" Dynaslide

Opening #	Fronts (WxL)	Box (HxWxL)
1,2		2) 4 x 30 15/16 x 28



Base Filler 1-33

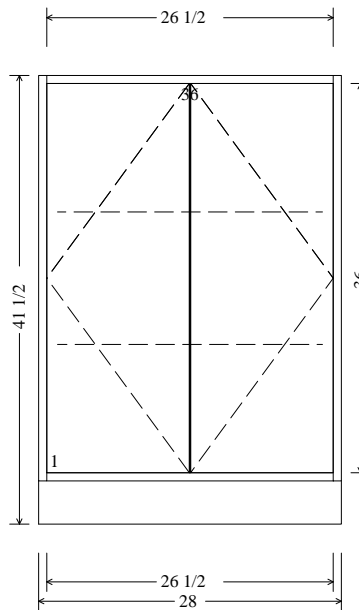
BASE FILLER

INTERIOR: Melamine 3/4"  
 TOP TYPE: 1-1/2" Granite Tops  
 DOOR STYLE: Liverpool JD  
 DRAWER STYLE: Slab Bullnose  
 DEPTH: 36

EXTERIOR: Maple Ply 3/4"  
 THICKNESS: 1 1/2"

BODIES

- 
- (1) 21 x 34 1/4 TK Base
  - (1) 21 x 28 1/8 TK Base
  - (1) 21 x 28 TK Base
  - (1) 1 3/4 x 34 1/2 Filler Cleat
  - (1) 1 x 34 1/2 Filler



Special 1-34

INTERIOR:	Melamine	3/4"	EXTERIOR:	Maple Ply	3/4"
TOP TYPE:	1-1/2" Granite Tops		THICKNESS:	0	
DOOR STYLE:	Liverpool				
DRAWER STYLE:	Slab Bullnose				
DEPTH:	12				

BODIES

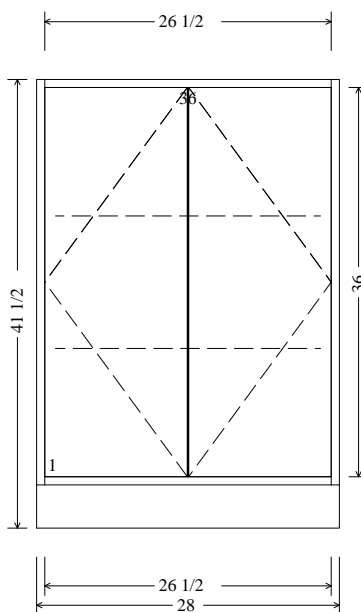
- 
- (2) 4 x 26 1/2 Nailers
  - (2) 12 x 37 1/2 Wall Base Sides
  - (1) 11 x 26 1/2 Bottom
  - (1) 11 x 26 1/2 Top
  - (2) 10 5/8 x 26 1/4 Adjustable Shelves
  - (1) 26 15/16 x 37 7/16 Back Panel
  - (1) 2 3/4 x 26 1/2 Crown Rail

DOORS Liverpool PULL(S): Door Pull HINGE(S): Salice 120 clip

---

Opening #	Finished Size (WxH)	Panels (WxH)
1	2) 13 7/8 x 37 1/8	2) 13 7/8 x 37 1/8

---



Special 1-35

INTERIOR:	Melamine	3/4"	EXTERIOR:	Maple Ply	3/4"
TOP TYPE:	1-1/2" Granite Tops		THICKNESS:	0	
DOOR STYLE:	Liverpool				
DRAWER STYLE:	Slab Bullnose				
DEPTH:	12				

BODIES

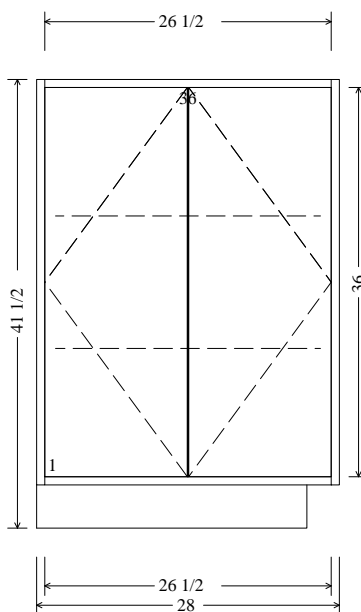
- 
- (2) 4 x 26 1/2 Nailers
  - (2) 12 x 37 1/2 Wall Base Sides
  - (1) 11 x 26 1/2 Bottom
  - (1) 11 x 26 1/2 Top
  - (2) 10 5/8 x 26 1/4 Adjustable Shelves
  - (1) 26 15/16 x 37 7/16 Back Panel
  - (1) 2 3/4 x 26 1/2 Crown Rail

DOORS Liverpool PULL(S): Door Pull HINGE(S): Salice 120 clip

---

Opening #	Finished Size (WxH)	Panels (WxH)
2)	13 7/8 x 37 1/8	2) 13 7/8 x 37 1/8

---



Special 1-36

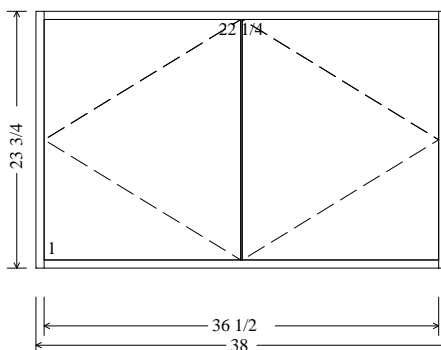
INTERIOR:	Melamine	3/4"	EXTERIOR:	Maple Ply	3/4"
TOP TYPE:	1-1/2" Granite Tops		THICKNESS:	0	
DOOR STYLE:	Liverpool				
DRAWER STYLE:	Slab Bullnose				
DEPTH:	12				

BODIES

- (2) 4 x 26 1/2 Nailers
- (2) 12 x 37 1/2 Wall Base Sides
- (1) 11 x 26 1/2 Bottom
- (1) 11 x 26 1/2 Top
- (2) 10 5/8 x 26 1/4 Adjustable Shelves
- (1) 26 15/16 x 37 7/16 Back Panel
- (1) 2 3/4 x 26 1/2 Crown Rail

DOORS Liverpool PULL(S): Door Pull HINGE(S): Salice 120 clip

Opening #	Finished Size (WxH)	Panels (WxH)
2)	13 7/8 x 37 1/8	2) 13 7/8 x 37 1/8



Upper Cabinet 1-37

INTERIOR: Melamine 3/4" EXTERIOR: Maple Ply 3/4"

DOOR STYLE: Liverpool

DRAWER STYLE: Slab Bullnose

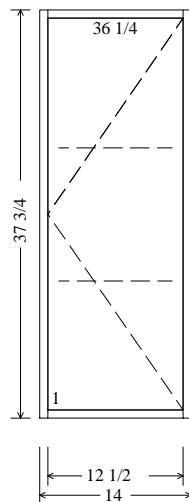
DEPTH: 24 3/4

BODIES

- (2) 4 x 36 1/2 Nailers
- (2) 24 3/4 x 23 3/4 Wall Upper Sides
- (1) 23 3/4 x 36 1/2 Top
- (1) 36 15/16 x 23 3/16 Back Panel
- (1) 24 3/4 x 36 1/2 Bottom
- (1) 2 3/4 x 36 1/2 Crown Rail

DOORS Liverpool PULL(S): Door Pull HINGE(S): Salice 120 clip

Opening #	Finished Size (WxH)	Panels (WxH)
2)	18 13/16 x 21 3/8	2) 18 13/16 x 21 3/8



Upper Cabinet 1-38

INTERIOR: Melamine 3/4" EXTERIOR: Maple Ply 3/4"

DOOR STYLE: Liverpool

DRAWER STYLE: Slab Bullnose

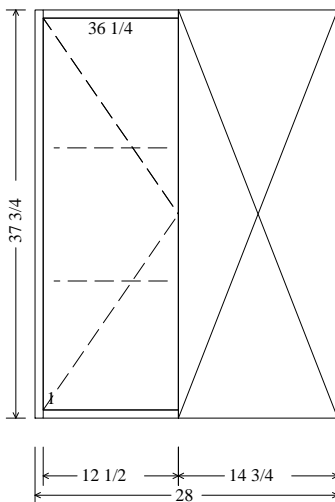
DEPTH: 13

BODIES

- (2) 4 x 12 1/2 Nailers
- (2) 13 x 37 3/4 Wall Upper Sides
- (1) 13 x 12 1/2 Bottom
- (1) 12 x 12 1/2 Top
- (2) 11 5/8 x 12 1/4 Adjustable Shelves
- (1) 12 15/16 x 37 3/16 Back Panel
- (1) 2 3/4 x 12 1/2 Crown Rail

DOORS Liverpool PULL(S): Door Pull HINGE(S): Salice 120 clip

Opening #	Finished Size (WxH)	Panels (WxH)
1)	13 13/16 x 35 3/8	1) 13 13/16 x 35 3/8



Upper Cabinet 1-39

INTERIOR: Melamine 3/4" EXTERIOR: Maple Ply 3/4"

DOOR STYLE: Liverpool

DRAWER STYLE: Slab Bullnose

DEPTH: 13

BODIES

- (2) 4 x 26 1/2 Nailers
- (1) 14 x 36 1/4 Corner Panel
- (2) 13 x 37 3/4 Wall Upper Sides
- (1) 13 x 26 1/2 Bottom
- (1) 12 x 26 1/2 Top
- (2) 10 7/8 x 26 1/4 Adjustable Shelves
- (1) 26 15/16 x 37 3/16 Back Panel
- (1) 1 1/4 x 37 3/4 Corner Stile
- (1) 2 3/4 x 26 1/2 Crown Rail

DOORS Liverpool PULL(S): Door Pull HINGE(S): Salice 120 clip

Opening #	Finished Size (WxH)	Panels (WxH)
1)	13 13/16 x 35 3/8	1) 13 13/16 x 35 3/8



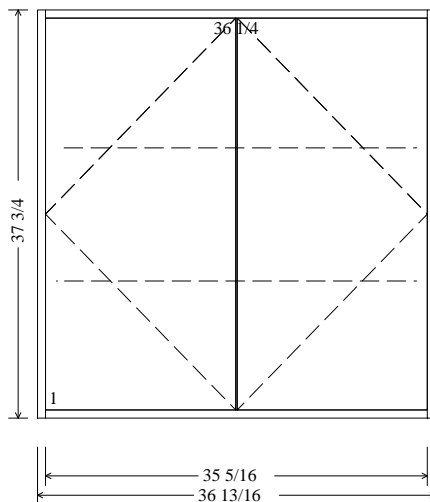
Upper Filler 1-40

INTERIOR:	Melamine	3/4"	EXTERIOR:	Maple Ply	3/4"
-----------	----------	------	-----------	-----------	------

DOOR STYLE: Liverpool  
 DRAWER STYLE: Slab Bullnose  
 DEPTH: 13

BODIES

- 
- (1) 1 3/4 x 37 3/4 Filler Cleat
  - (1) 2 x 37 3/4 Filler



Upper Cabinet 1-41

INTERIOR: Melamine 3/4" EXTERIOR: Maple Ply 3/4"

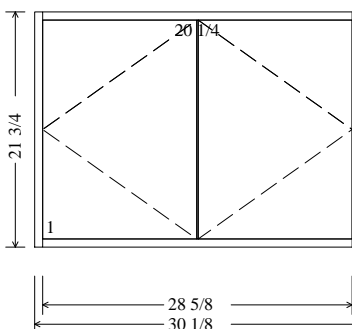
DOOR STYLE: Liverpool  
 DRAWER STYLE: Slab Bullnose  
 DEPTH: 13

BODIES

- (2) 4 x 35 5/16 Nailers
- (2) 13 x 37 3/4 Wall Upper Sides
- (1) 13 x 35 5/16 Bottom
- (1) 12 x 35 5/16 Top
- (2) 11 5/8 x 35 1/16 Adjustable Shelves
- (1) 35 3/4 x 37 3/16 Back Panel
- (1) 2 3/4 x 35 5/16 Crown Rail

DOORS Liverpool PULL(S): Door Pull HINGE(S): Salice 120 clip

Opening #	Finished Size (WxH)	Panels (WxH)
1	2) 18 1/4 x 35 3/8	2) 18 1/4 x 35 3/8



Upper Cabinet 1-42

INTERIOR: Melamine 3/4" EXTERIOR: Maple Ply 3/4"

DOOR STYLE: Liverpool

DRAWER STYLE: Slab Bullnose

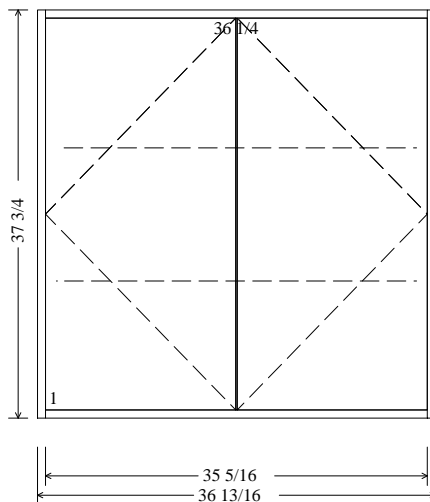
DEPTH: 13

BODIES

- (2) 4 x 28 5/8 Nailers
- (1) 13 x 28 5/8 Bottom
- (2) 13 x 21 3/4 Wall Upper Sides
- (1) 12 x 28 5/8 Top
- (1) 29 1/16 x 21 3/16 Back Panel
- (1) 2 3/4 x 28 5/8 Crown Rail

DOORS Liverpool PULL(S): Door Pull HINGE(S): Salice 120 clip

Opening #	Finished Size (WxH)	Panels (WxH)
1	2) 15 x 19 1/4	2) 15 x 19 1/4



Upper Cabinet 1-43

INTERIOR: Melamine 3/4" EXTERIOR: Maple Ply 3/4"

DOOR STYLE: Liverpool

DRAWER STYLE: Slab Bullnose

DEPTH: 13

BODIES

- (2) 4 x 35 5/16 Nailers
- (2) 13 x 37 3/4 Wall Upper Sides
- (1) 13 x 35 5/16 Bottom
- (1) 12 x 35 5/16 Top
- (2) 11 5/8 x 35 1/16 Adjustable Shelves
- (1) 35 3/4 x 37 3/16 Back Panel
- (1) 2 3/4 x 35 5/16 Crown Rail

DOORS Liverpool PULL(S): Door Pull HINGE(S): Salice 120 clip

Opening #	Finished Size (WxH)	Panels (WxH)
1	2) 18 1/4 x 35 3/8	2) 18 1/4 x 35 3/8



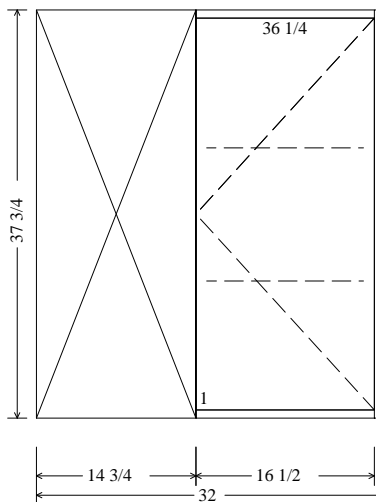
Upper Filler 1-44

INTERIOR: Melamine 3/4" EXTERIOR: Maple Ply 3/4"

DOOR STYLE: Liverpool  
DRAWER STYLE: Slab Bullnose  
DEPTH: 13

BODIES

- 
- (1) 1 3/4 x 37 3/4 Filler Cleat
  - (1) 2 x 37 3/4 Filler



Upper Cabinet 1-45

INTERIOR: Melamine 3/4" EXTERIOR: Maple Ply 3/4"

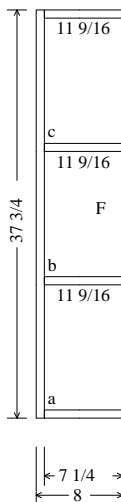
DOOR STYLE: Liverpool  
 DRAWER STYLE: Slab Bullnose  
 DEPTH: 13

BODIES

- (2) 4 x 30 1/2 Nailers
- (1) 14 x 36 1/4 Corner Panel
- (2) 13 x 37 3/4 Wall Upper Sides
- (1) 13 x 30 1/2 Bottom
- (1) 12 x 30 1/2 Top
- (2) 10 7/8 x 30 1/4 Adjustable Shelves
- (1) 30 15/16 x 37 3/16 Back Panel
- (1) 1 1/4 x 37 3/4 Corner Stile
- (1) 2 3/4 x 30 1/2 Crown Rail

DOORS Liverpool PULL(S): Door Pull HINGE(S): Salice 120 clip

Opening #	Finished Size (WxH)	Panels (WxH)
1	1) 18 5/8 x 35 3/8	1) 18 5/8 x 35 3/8



Upper Cabinet 1-46

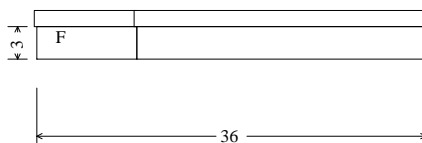
ENDCABINET UPPER  
 Right Clip 45.0 deg. depth 8.00  
 EXTERIOR: Maple Ply 3/4"

INTERIOR: Maple Ply 3/4"

DOOR STYLE: Liverpool JD  
 DRAWER STYLE: Slab Bullnose  
 DEPTH: 12

BODIES

- 
- (1) 12 x 37 3/4 Wall Upper Side
  - \* (1) 11 1/4 x 7 1/4 Top
  - \* (1) 7 1/4 x 37 3/4 Finished End
  - (2) 11 1/4 x 7 1/4 Horiz Partitions
  - \* (1) 11 1/4 x 7 1/4 Bottom
  - (1) 1 1/2 x 37 3/4 Back Filler



Special Filler 1-47

INTERIOR: Melamine

3/4"

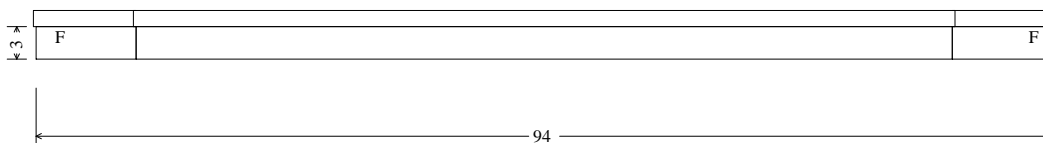
SPECIAL FLR  
Left Clip 45.0 deg. depth 12.75  
EXTERIOR: Maple Ply

3/4"

DOOR STYLE: Liverpool JD  
DRAWER STYLE: Slab Bullnose  
DEPTH: 22

BODIES

- 
- \* (1) 3 x 40 Finished End
  - (1) 3 x 13 1/4 Filler
  - (1) 3 x 13 1/16 Filler



Special Filler 1-48

SPECIAL FLR

Left Clip 45.0 deg. depth 12.75, Right Clip 45.0 deg. depth 12.75

INTERIOR: Melamine 3/4"

EXTERIOR: Maple Ply 3/4"

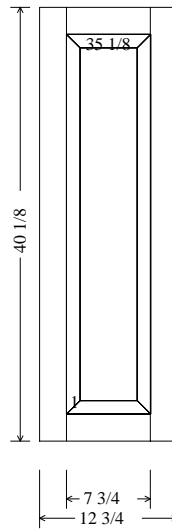
DOOR STYLE: Liverpool JD

DRAWER STYLE: Slab Bullnose

DEPTH: 22

BODIES

- 
- (1) 3 x 75 1/2 Filler
  - \* (6) 3 x 21 Supports
  - \* (1) 3 x 13 1/4 Finished End
  - (2) 3 x 13 1/16 Fillers



Base Wainscot 1-49

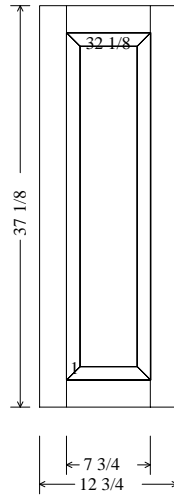
PANEL: EXTERIOR: Maple Ply 3/4"

PANEL STYLE: Liverpool Panel

DEPTH: 3/4

END PANELS/WAINSCOT Liverpool Panel

Finished Size (WxH)	Panels (WxH)
1) 12 3/4 x 40 1/8	1) 12 3/4 x 40 1/8



Base Wainscot 1-50

PANEL: EXTERIOR: Maple Ply 3/4"

PANEL STYLE: Liverpool Panel

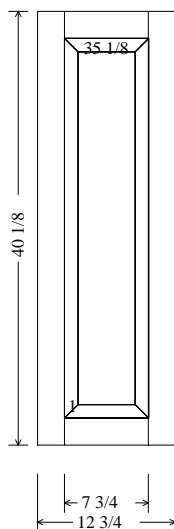
DEPTH: 3/4

END PANELS/WAINSCOT Liverpool Panel

---

Finished Size (WxH)	Panels (WxH)
1) 12 3/4 x 37 1/8	1) 12 3/4 x 37 1/8

---



Base Wainscot 1-51

PANEL: EXTERIOR: Maple Ply 3/4"

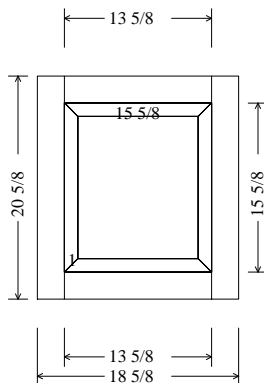
PANEL STYLE: Liverpool Panel  
DEPTH: 3/4

END PANELS/WAINSCOT Liverpool Panel

---

Finished Size (WxH)	Panels (WxH)
1) 12 3/4 x 40 1/8	1) 12 3/4 x 40 1/8

---



Custom Wainscot 1-52

PANEL: EXTERIOR: Maple Ply 3/4"

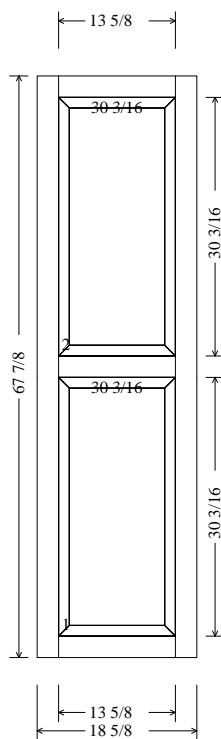
PANEL STYLE: Liverpool Panel  
DEPTH: 3/4

END PANELS/WAINSCOT Liverpool Panel

---

Finished Size (WxH)	Panels (WxH)
1) 18 5/8 x 20 5/8	1) 18 5/8 x 20 5/8

---



Custom Wainscot 1-53

PANEL: EXTERIOR: Maple Ply 3/4"

PANEL STYLE: Liverpool Panel  
DEPTH: 3/4

END PANELS/WAINSCOT Liverpool Panel

---

Finished Size (WxH)	Panels (WxH)
1) 18 5/8 x 67 7/8	1) 18 5/8 x 67 7/8

---



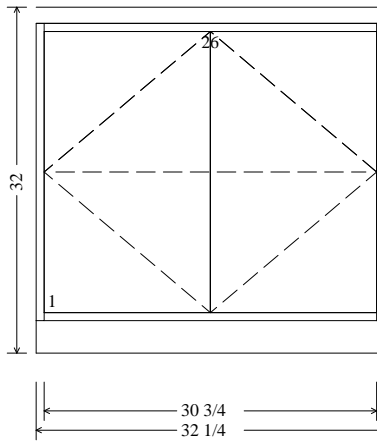
Base Filler 2-1

BASE FILLER

INTERIOR:	Melamine	3/4"	EXTERIOR:	Maple Ply	3/4"
TOP TYPE:	1-1/2" Granite Tops		THICKNESS:	1 1/2	
DOOR STYLE:	Liverpool JD				
DRAWER STYLE:	PWSLABDR.DAT				
DEPTH:	22				

BODIES

- 
- (1) 1 3/4 x 27 1/2 Filler Cleat
  - (1) 22 1/4 x 68 1/2 Wood Top
  - (1) 2 x 27 1/2 Filler
  - (1) 1 1/2 x 68 1/2 Wood Top EB



Base Cabinet 2-2

BASE

INTERIOR:	Melamine	3/4"	EXTERIOR:	Maple Ply	3/4"
TOP TYPE:	1-1/2" Granite Tops		THICKNESS:	1 1/2	
DOOR STYLE:	Liverpool JD				
DRAWER STYLE:	PWSLABDR.DAT				
DEPTH:	22				

BODIES

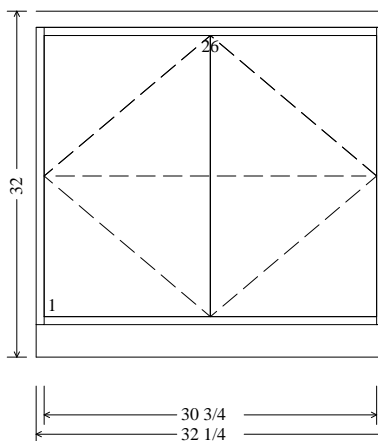
- 
- (2) 4 x 30 3/4 Nailers
  - (2) 22 x 27 1/2 Wall Base Sides
  - (1) 20 5/8 x 30 1/2 Adjustable Shelf
  - (1) 16 3/4 x 30 3/4 Bottom
  - (1) 7 1/4 x 30 3/4 Bottom
  - (1) 5 x 30 3/4 Bottom
  - (1) 31 1/4 x 19 1/2 Back Panel
  - (2) 4 x 30 3/4 Top Stretchers

DOORS Liverpool JD PULL(S): Door Pull HINGE(S): Salice 120 clip

---

Opening #	Finished Size (WxH)	Panels (WxH)
1	2) 16 x 27 1/8	2) 16 x 27 1/8

---



Base Cabinet 2-3

BASE

INTERIOR:	Melamine	3/4"	EXTERIOR:	Maple Ply	3/4"
TOP TYPE:	1-1/2" Granite Tops		THICKNESS:	1 1/2	
DOOR STYLE:	Liverpool JD				
DRAWER STYLE:	PWSLABDR.DAT				
DEPTH:	22				

BODIES

- 
- (2) 4 x 30 3/4 Nailers
  - (2) 22 x 27 1/2 Wall Base Sides
  - (1) 20 5/8 x 30 1/2 Adjustable Shelf
  - (1) 16 3/4 x 30 3/4 Bottom
  - (1) 7 1/4 x 30 3/4 Bottom
  - (1) 5 x 30 3/4 Bottom
  - (1) 31 1/4 x 19 1/2 Back Panel
  - (2) 4 x 30 3/4 Top Stretchers

DOORS Liverpool JD PULL(S): Door Pull HINGE(S): Salice 120 clip

---

Opening #	Finished Size (WxH)	Panels (WxH)
1	2) 16 x 27 1/8	2) 16 x 27 1/8

---



Base Filler 2-4

BASE FILLER

INTERIOR:	Melamine	3/4"	EXTERIOR:	Maple Ply	3/4"
TOP TYPE:	1-1/2" Granite Tops		THICKNESS:	1 1/2	
DOOR STYLE:	Liverpool JD				
DRAWER STYLE:	PWSLABDR.DAT				
DEPTH:	22				

BODIES

- 
- (1) 1 3/4 x 27 1/2 Filler Cleat
  - (1) 2 x 27 1/2 Filler



△  
1 1/2

Upper Filler 2-5

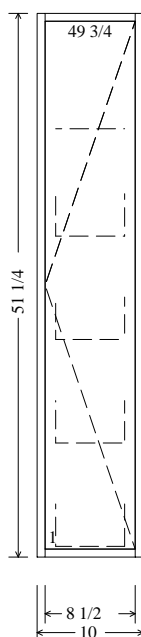
UPPER FILLER

INTERIOR:	Melamine	3/4"	EXTERIOR:	Maple Ply	3/4"
-----------	----------	------	-----------	-----------	------

DOOR STYLE: Liverpool JD  
 DRAWER STYLE: PWSLABDR.DAT  
 DEPTH: 20

BODIES

- 
- (1) 1 3/4 x 51 1/4 Filler Cleat
  - (1) 2 x 51 1/4 Filler



Upper Cabinet 2-6

INTERIOR: Melamine 3/4" EXTERIOR: Maple Ply 3/4"

DOOR STYLE: Liverpool Split

DRAWER STYLE: PWSLABDR.DAT

DEPTH: 20

BODIES

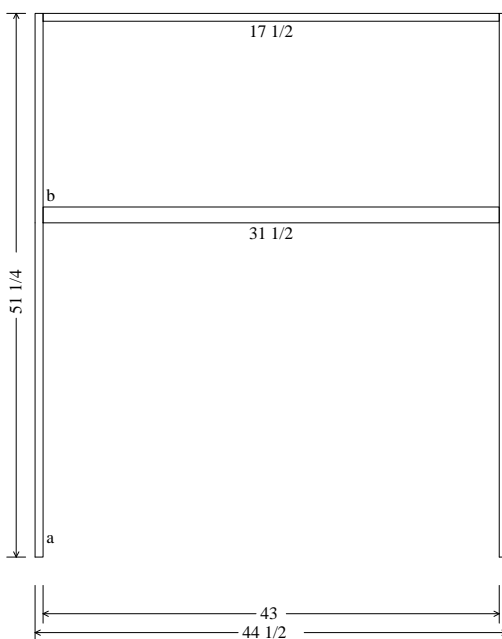
- (2) 4 x 8 1/2 Nailers
- (2) 20 x 51 1/4 Wall Upper Sides
- (1) 20 x 8 1/2 Bottom
- (1) 19 x 8 1/2 Top
- (1) 18 5/8 x 8 1/4 Adjustable Shelf
- (1) 8 15/16 x 50 11/16 Back Panel
- (1) 2 3/4 x 8 1/2 Crown Rail

DOORS Liverpool Split PULL(S): Door Pull HINGE(S): Salice 120 clip

Opening #	Finished Size (WxH)	Panels (WxH)
1	1) 10 5/8 x 47 7/8	1) 10 5/8 x 47 7/8

PULL-OUTS PULL(S): SLIDES: 18" Dynaslide

Opening #	Fronts (WxL)	Box (HxWxL)
1,2,3,4		4) 4 x 6 11/16 x 18



Upper Cabinet 2-7

UPPER

INTERIOR: Maple Ply 3/4" EXTERIOR: Maple Ply 3/4"

DOOR STYLE: Liverpool JD

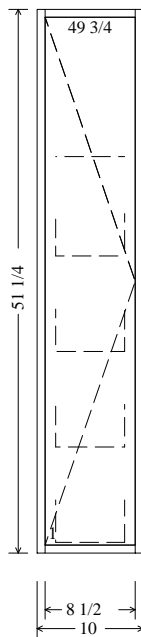
DRAWER STYLE: PWSLABDR.DAT

DEPTH: 19 1/4

BODIES FACE FRAMES

---

- |            |          |                  |           |      |             |
|------------|----------|------------------|-----------|------|-------------|
| (2) 4      | x 43     | Nailers          | (1) 1 1/2 | x 43 | Middle Rail |
| (2) 20     | x 51 1/4 | Wall Upper Sides |           |      |             |
| (1) 19     | x 43     | Top              |           |      |             |
| (1) 18 1/4 | x 43     | Horiz Partition  |           |      |             |
| (1) 43 1/2 | x 51 1/4 | Back Panel       |           |      |             |



Upper Cabinet 2-8

INTERIOR: Melamine 3/4" EXTERIOR: Maple Ply 3/4"

DOOR STYLE: Liverpool Split

DRAWER STYLE: PWSLABDR.DAT

DEPTH: 20

BODIES

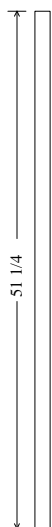
- (2) 4 x 8 1/2 Nailers
- (2) 20 x 51 1/4 Wall Upper Sides
- (1) 20 x 8 1/2 Bottom
- (1) 19 x 8 1/2 Top
- (1) 18 5/8 x 8 1/4 Adjustable Shelf
- (1) 8 15/16 x 50 11/16 Back Panel
- (1) 2 3/4 x 8 1/2 Crown Rail

DOORS Liverpool Split PULL(S): Door Pull HINGE(S): Salice 120 clip

Opening #	Finished Size (WxH)	Panels (WxH)
1	1) 10 5/8 x 47 7/8	1) 10 5/8 x 47 7/8

PULL-OUTS PULL(S): SLIDES: 18" Dynaslide

Opening #	Fronts (WxL)	Box (HxWxL)
1,2,3,4	4) 4	x 6 11/16 x 18



1 1/2

Upper Filler 2-9

UPPER FILLER

INTERIOR: Melamine 3/4"

EXTERIOR: Maple Ply

3/4"

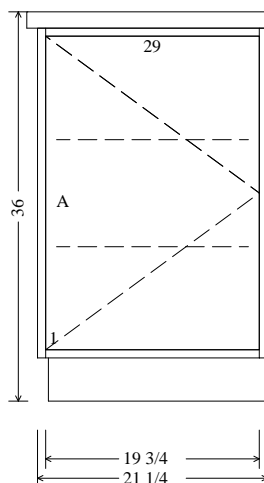
DOOR STYLE: Liverpool JD

DRAWER STYLE: PWSLABDR.DAT

DEPTH: 20

BODIES

- 
- (1) 1 3/4 x 51 1/4 Filler Cleat
  - (1) 2 x 51 1/4 Filler



Base Cabinet 3-1

INTERIOR:	Melamine	3/4"	EXTERIOR:	Red Oak Ply	3/4"
TOP TYPE:	1-1/2" Granite Tops		THICKNESS:	1 1/2	
DOOR STYLE:	LIVERF				
DRAWER STYLE:	PWSLABDR.DAT				
DEPTH:	11				

BODIES

- 
- (2) 4 x 19 3/4 Nailers
  - (2) 11 x 30 1/2 Wall Base Sides
  - (1) 10 x 19 3/4 Bottom
  - (2) 9 5/8 x 19 1/2 Adjustable Shelves
  - (1) 20 3/16 x 30 7/16 Back Panel
  - (2) 4 x 19 3/4 Top Stretchers

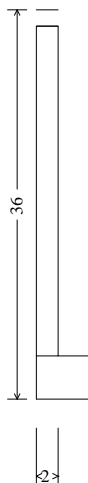
DOORS LIVERF PULL(S): Door Pull HINGE(S): Salice 120 clip

---

Opening #	Finished Size (WxH)	Panels (WxH)
1	1) 19 3/4 x 29	1) 19 3/4 x 29

---



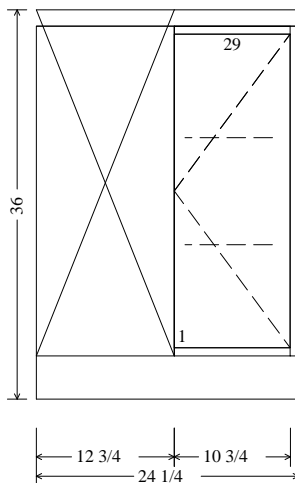


Base Filler            3-2

INTERIOR:	Melamine	3/4"	EXTERIOR:	Red Oak Ply	3/4"
TOP TYPE:	1-1/2" Granite Tops		THICKNESS:	1 1/2	
DOOR STYLE:	LIVERF				
DRAWER STYLE:	PWSLABDR.DAT				
DEPTH:	11				

BODIES

- 
- (1) 2        x 30 1/2     Filler
  - (1) 1 3/4   x 30 1/2     Filler Cleat



Base Cabinet 3-3

INTERIOR:	Melamine	3/4"	EXTERIOR:	Red Oak Ply	3/4"
TOP TYPE:	1-1/2" Granite Tops		THICKNESS:	1 1/2	
DOOR STYLE:	LIVERF				
DRAWER STYLE:	PWSLABDR.DAT				
DEPTH:	21				

BODIES

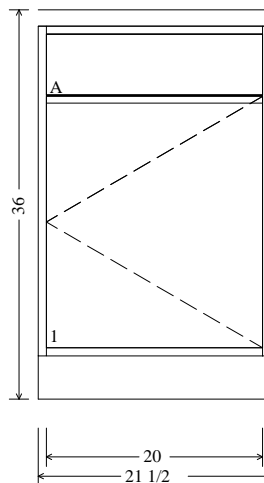
- 
- (1) 2 1/4 x 30 1/2 Corner Stile
  - (2) 4 x 22 3/4 Nailers
  - (2) 21 x 30 1/2 Wall Base Sides
  - (1) 20 x 22 3/4 Bottom
  - (2) 18 7/8 x 22 1/2 Adjustable Shelves
  - (1) 12 x 29 Corner Panel
  - (1) 23 3/16 x 30 7/16 Back Panel
  - (2) 4 x 22 3/4 Top Stretchers

DOORS LIVERF PULL(S): Door Pull HINGE(S): Salice 120 clip

---

Opening #	Finished Size (WxH)	Panels (WxH)
1)	11 3/8 x 29	1) 11 3/8 x 29

---



Base Cabinet 3-4

INTERIOR:	Melamine	3/4"	EXTERIOR:	Red Oak Ply	3/4"
TOP TYPE:	1-1/2" Granite Tops		THICKNESS:	1 1/2	
DOOR STYLE:	LIVERF		OPENING #	Drawer Opening Height	
DRAWER STYLE:	PWSLABDR.DAT		A:	6	
DEPTH:	21				

BODIES

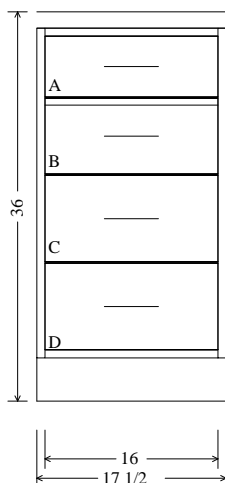
- (2) 4 x 20 Nailers
- (2) 21 x 30 1/2 Wall Base Sides
- (1) 20 x 20 Bottom
- (1) 7 1/2 x 20 False Front Back
- (1) 20 7/16 x 30 7/16 Back Panel

DOORS LIVERF PULL(S): Door Pull HINGE(S): Salice 120 clip

Opening #	Finished Size (WxH)		Panels (WxH)	
1	1) 20	x 22 7/8	1) 20	x 22 7/8

DRAWERS PULL(S): Drawer Pull SLIDES:

Opening #	Finished Size (WxL)		Fronts (WxL)	Sides (WxL)	Ends (WxL)	Bottoms (WxL)
A	1) 6	x 20	1) 6	x 20		



Base Cabinet 3-5

INTERIOR: Melamine 3/4" EXTERIOR: Red Oak Ply 3/4"  
 TOP TYPE: 1-1/2" Granite Tops THICKNESS: 1 1/2"  
 DOOR STYLE: LIVERF OPENING # Drawer Opening Height  
 DRAWER STYLE: PWSLABDR.DAT A: 6  
 DEPTH: 21 B: 6 3/8  
 C: 7 3/8  
 D: 8 1/8

BODIES

MOUNTING HOLES

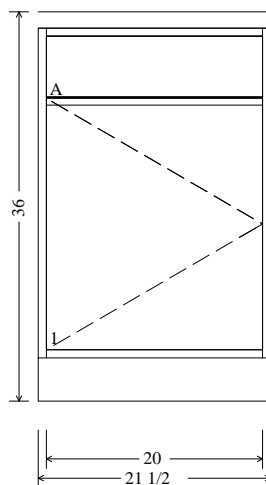
BODIES			MOUNTING HOLES				Bottom Lip	
Quantity	Size	Description	Section #	Item	Reference	Center Lines	Mounting Holes	Reference
(2)	4 x 16	Nailers						
(2)	21 x 30 1/2	Wall Base Sides						
(1)	20 x 16	Bottom	1-1	Drawer A	Bottom		25 7/8 in.	1/8
(1)	16 7/16 x 30 7/16	Back Panel	1-1	Drawer B	Bottom		18 3/4 in.	1/8
(3)	4 x 16	Stretchers	1-1	Drawer C	Bottom		10 5/8 in.	1/8
(2)	4 x 16	Top Stretchers	1-1	Drawer D	Bottom		1 3/4 in.	1/8

DRAWERS

PULL(S): Drawer Pull

SLIDES: 18" Dynaslide

Opening #	Finished Size (WxL)	Fronts (WxL)	Box (HxWxL)
D	1) 8 3/4 x 16	1) 8 3/4 x 16	1) 8 x 14 15/16 x 18
C	1) 8 x 16	1) 8 x 16	1) 7 x 14 15/16 x 18
B	1) 7 x 16	1) 7 x 16	1) 6 x 14 15/16 x 18
A	1) 6 x 16	1) 6 x 16	1) 5 x 14 15/16 x 18



Base Cabinet 3-6

INTERIOR:	Melamine	3/4"	EXTERIOR:	Red Oak Ply	3/4"
TOP TYPE:	1-1/2" Granite Tops		THICKNESS:	1 1/2	
DOOR STYLE:	LIVERF		OPENING #	Drawer Opening Height	
DRAWER STYLE:	PWSLABDR.DAT		A:	6	
DEPTH:	21				

BODIES

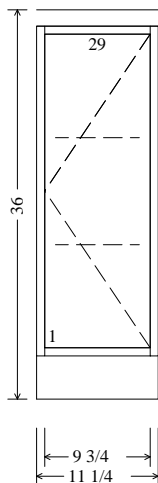
- (2) 4 x 20 Nailers
- (2) 21 x 30 1/2 Wall Base Sides
- (1) 20 x 20 Bottom
- (1) 7 1/2 x 20 False Front Back
- (1) 20 7/16 x 30 7/16 Back Panel

DOORS LIVERF PULL(S): Door Pull HINGE(S): Salice 120 clip

Opening #	Finished Size (WxH)	Panels (WxH)
1	1) 20 x 22 7/8	1) 20 x 22 7/8

DRAWERS PULL(S): Drawer Pull SLIDES:

Opening #	Finished Size (WxL)	Fronts (WxL)	Sides (WxL)	Ends (WxL)	Bottoms (WxL)
A	1) 6 x 20	1) 6 x 20			



Base Cabinet 3-7

INTERIOR:	Melamine	3/4"	EXTERIOR:	Red Oak Ply	3/4"
TOP TYPE:	1-1/2" Granite Tops		THICKNESS:	1 1/2	
DOOR STYLE:	LIVERF				
DRAWER STYLE:	PWSLABDR.DAT				
DEPTH:	21				

BODIES

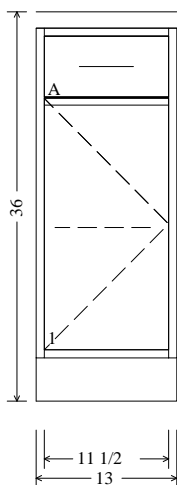
- 
- (2) 4 x 9 3/4 Nailers
  - (2) 21 x 30 1/2 Wall Base Sides
  - (1) 20 x 9 3/4 Bottom
  - (2) 19 5/8 x 9 1/2 Adjustable Shelves
  - (1) 10 3/16 x 30 7/16 Back Panel
  - (2) 4 x 9 3/4 Top Stretchers

DOORS LIVERF PULL(S): Door Pull HINGE(S): Salice 120 clip

---

Opening #	Finished Size (WxH)	Panels (WxH)
1	1) 10 7/16 x 29	1) 10 7/16 x 29

---



Base Cabinet 3-8

INTERIOR:	Melamine	3/4"	EXTERIOR:	Red Oak Ply	3/4"
TOP TYPE:	1-1/2" Granite Tops		THICKNESS:	1 1/2	
DOOR STYLE:	LIVERF		OPENING #	Drawer Opening Height	
DRAWER STYLE:	PWSLABDR.DAT		A:	6	
DEPTH:	21				

BODIES			MOUNTING HOLES					
-----			Section				Bottom Lip	
			#	Item	Reference	Center Lines	Mounting Holes	Reference
-----			-----					-----
(2)	4	x 11 1/2		Nailers				
(2)	21	x 30 1/2		Wall Base Sides				
(1)	20	x 11 1/2		Bottom				
(1)	19 5/8	x 11 1/4		Adjustable Shelf				
(1)	11 15/16	x 30 7/16		Back Panel				
(1)	4	x 11 1/2		Stretcher				
(2)	4	x 11 1/2		Top Stretchers				
			1-1	Drawer A	Bottom		25 7/8 in.	1/8

DOORS LIVERF PULL(S): Door Pull HINGE(S): Salice 120 clip

Opening #	Finished Size (WxH)	Panels (WxH)
-----		
1	1) 12 1/8 x 22 7/8	1) 12 1/8 x 22 7/8

DRAWERS PULL(S): Drawer Pull SLIDES: 18" Dynaslide

Opening #	Finished Size (WxL)	Fronts (WxL)	Box (HxWxL)
-----			
A	1) 6 x 12 1/8	1) 6 x 12 1/8	1) 5 x 10 7/16 x 18



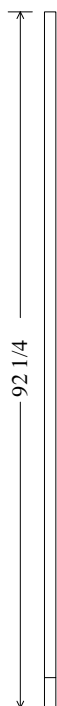
Base Filler 3-9

BASE FILLER

INTERIOR:	Melamine	3/4"	EXTERIOR:	Red Oak Ply	3/4"
TOP TYPE:	1-1/2" Granite Tops		THICKNESS:	1 1/2	
DOOR STYLE:	Liverpool JD				
DRAWER STYLE:	PWSLABDR.DAT				
DEPTH:	21				

BODIES

- 
- (1) 2 x 30 1/2 Filler
  - (1) 1 3/4 x 30 1/2 Filler Cleat

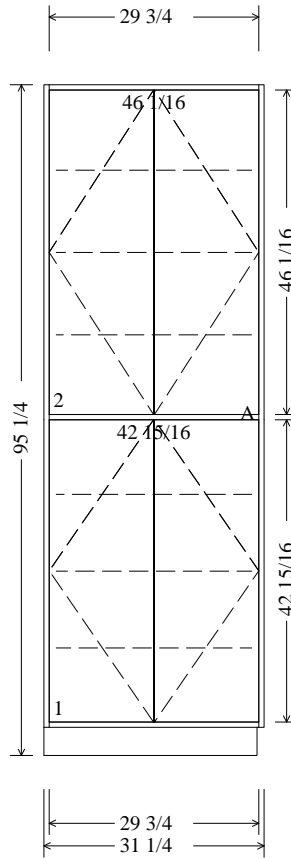


Special Filler 3-10

INTERIOR:	Melamine	3/4"	EXTERIOR:	Red Oak Ply	3/4"
TOP TYPE:	1-1/2" Granite Tops		THICKNESS:	0	
DOOR STYLE:	LIVERF				
DRAWER STYLE:	PWSLABDR.DAT				
DEPTH:	20				

BODIES

- 
- (1) 1 1/2 x 88 1/4 Filler
  - (1) 1 3/4 x 88 1/4 Filler Cleat



Pantry 3-11

INTERIOR: Melamine 3/4" EXTERIOR: Red Oak Ply 3/4"  
 TOP TYPE: 1-1/2" Granite Tops THICKNESS: 0  
 DOOR STYLE: LIVERF  
 DRAWER STYLE: PWSLABDR.DAT  
 DEPTH: 20

BODIES

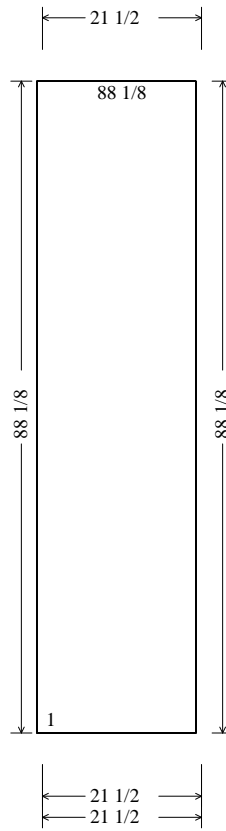
- 
- (3) 4 x 29 3/4 Nailers
  - (2) 20 x 91 1/4 Wall Base Sides
  - (1) 19 x 29 3/4 Fix Shelf
  - (1) 19 x 29 3/4 Bottom
  - (1) 19 x 29 3/4 Top
  - (6) 18 5/8 x 29 1/2 Adjustable Shelves
  - (1) 30 3/16 x 91 3/16 Back Panel
  - (1) 2 3/4 x 29 3/4 Crown Rail

DOORS LIVERF PULL(S): Door Pull HINGE(S): Salice 120 clip

---

Opening #	Finished Size (WxH)	Panels (WxH)
2	2) 14 7/8 x 46 1/16	2) 14 7/8 x 46 1/16
1	2) 14 7/8 x 42 15/16	2) 14 7/8 x 42 15/16

---



Pantry 3-11Right

PANEL: EXTERIOR: Red Oak Ply 3/4"

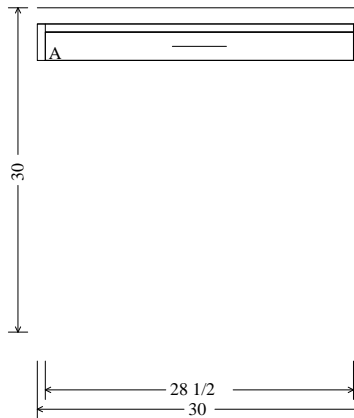
PANEL STYLE: Oslo

END PANELS/WAINSCOT Oslo

---

Finished Size (WxH)	Panels (WxH)
1) 21 1/2 x 88 1/8	1) 21 1/2 x 88 1/8

---



Base Cabinet 3-12

BASE

INTERIOR:	Melamine	3/4"	EXTERIOR:	Red Oak Ply	3/4"
TOP TYPE:	1-1/2" Granite Tops		THICKNESS:	1 1/2	
DOOR STYLE:	Liverpool JD		OPENING #	Drawer Opening Height	
DRAWER STYLE:	PWSLABDR.DAT		A:	2 5/8	
DEPTH:	18				

BODIES

MOUNTING HOLES

-----			Section				Bottom Lip		
(1)	3 3/8	x 28 1/2	Nailers	#	Item	Reference	Center Lines	Mounting Holes	Reference
(2)	18	x 3 3/8	Wall Base Sides						
(2)	4	x 28 1/2	Top Stretchers	1-1	Drawer A	Bottom		2 1/4 in.	1/4

DRAWERS Slab Drw Front PULL(S): Drawer Pull SLIDES: 16" Dynaslide

Opening #	Finished Size (WxL)		Fronts (WxL)		Box (HxWxL)	
A	1)	3 x 29 3/4	1)	3 x 29 3/4	1)	2 x 27 7/16 x 16



Base Filler 3-13

INTERIOR:	Melamine	3/4"	EXTERIOR:	Red Oak Ply	3/4"
TOP TYPE:	1-1/2" Granite Tops		THICKNESS:	1 1/2	
DOOR STYLE:	LIVERF				
DRAWER STYLE:	PWSLABDR.DAT				
DEPTH:	18 3/4				

BODIES

- 
- (1) 18 1/2 x 28 1/2 Finished End
  - (1) 1 1/2 x 28 1/2 Filler
  - (1) 1 3/4 x 28 1/2 Filler Cleat



Base Filler 4-1

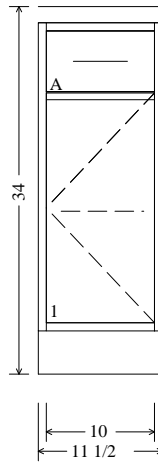
BASE FILLER

INTERIOR: Melamine 3/4"  
 TOP TYPE: 1-1/2" Granite Tops  
 DOOR STYLE: Liverpool JD  
 DRAWER STYLE: PWSLABDR.DAT  
 DEPTH: 21

EXTERIOR: Red Oak Ply 3/4"  
 THICKNESS: 1 1/2

BODIES

- 
- (1) 2 x 28 1/2 Filler
  - (1) 1 3/4 x 28 1/2 Filler Cleat



Base Cabinet 4-2

INTERIOR: Melamine 3/4" EXTERIOR: Red Oak Ply 3/4"  
 TOP TYPE: 1-1/2" Granite Tops THICKNESS: 1 1/2"  
 DOOR STYLE: LIVERF OPENING # Drawer Opening Height  
 DRAWER STYLE: PWSLABDR.DAT A: 6  
 DEPTH: 21

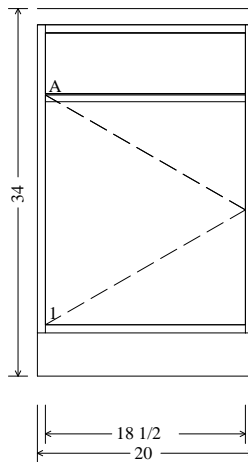
BODIES			MOUNTING HOLES				
			Section				Bottom Lip
#	Item	Reference	Center Lines	Mounting Holes	Reference		
(2) 4	x 10 Nailers						
(2) 21	x 28 1/2 Wall Base Sides						
(1) 20	x 10 Bottom						
(1) 19 5/8	x 9 3/4 Adjustable Shelf						
(1) 10 7/16	x 28 7/16 Back Panel						
(1) 4	x 10 Stretcher						
(2) 4	x 10 Top Stretchers						
			1-1	Drawer A Bottom	23 7/8 in.	1/8	

DOORS LIVERF PULL(S): Door Pull HINGE(S): Salice 120 clip

Opening #	Finished Size (WxH)		Panels (WxH)	
1	1) 10	x 20 7/8	1) 10	x 20 7/8

DRAWERS PULL(S): Drawer Pull SLIDES: 18" Dynaslide

Opening #	Finished Size (WxL)		Fronts (WxL)		Box (HxWxL)	
A	1) 6	x 10	1) 6	x 10	1) 5	x 8 15/16 x 18



Base Cabinet 4-3

INTERIOR:	Melamine	3/4"	EXTERIOR:	Red Oak Ply	3/4"
TOP TYPE:	1-1/2" Granite Tops		THICKNESS:	1 1/2	
DOOR STYLE:	LIVERF		OPENING #	Drawer Opening Height	
DRAWER STYLE:	PWSLABDR.DAT		A:	6	
DEPTH:	21				

BODIES

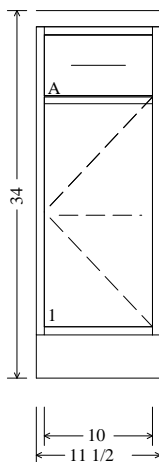
- (2) 4 x 18 1/2 Nailers
- (2) 21 x 28 1/2 Wall Base Sides
- (1) 20 x 18 1/2 Bottom
- (1) 7 1/2 x 18 1/2 False Front Back
- (1) 18 15/16 x 28 7/16 Back Panel

DOORS LIVERF PULL(S): Door Pull HINGE(S): Salice 120 clip

Opening #	Finished Size (WxH)	Panels (WxH)
1)	18 1/2 x 20 7/8	1) 18 1/2 x 20 7/8

DRAWERS PULL(S): Drawer Pull SLIDES:

Opening #	Finished Size (WxL)	Fronts (WxL)	Sides (WxL)	Ends (WxL)	Bottoms (WxL)
A	1) 6 x 18 1/2	1) 6 x 18 1/2			



Base Cabinet 4-4

INTERIOR: Melamine 3/4" EXTERIOR: Red Oak Ply 3/4"  
 TOP TYPE: 1-1/2" Granite Tops THICKNESS: 1 1/2"  
 DOOR STYLE: LIVERF OPENING # Drawer Opening Height  
 DRAWER STYLE: PWSLABDR.DAT A: 6  
 DEPTH: 21

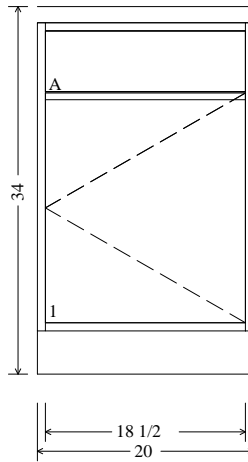
BODIES			MOUNTING HOLES				Bottom Lip	
-----			Section	#	Item Reference	Center Lines	Mounting Holes	Reference
(2)	4	x 10	Nailers					
(2)	21	x 28 1/2	Wall Base Sides					
(1)	20	x 10	Bottom	1-1	Drawer A Bottom		23 7/8 in.	1/8
(1)	19 5/8	x 9 3/4	Adjustable Shelf					
(1)	10 7/16	x 28 7/16	Back Panel					
(1)	4	x 10	Stretcher					
(2)	4	x 10	Top Stretchers					

DOORS LIVERF PULL(S): Door Pull HINGE(S): Salice 120 clip

Opening #	Finished Size (WxH)		Panels (WxH)	
1	1) 10	x 20 7/8	1) 10	x 20 7/8

DRAWERS PULL(S): Drawer Pull SLIDES: 18" Dynaslide

Opening #	Finished Size (WxL)		Fronts (WxL)		Box (HxWxL)	
	1) 6	x 10	1) 6	x 10	1) 5	x 8 15/16 x 18



Base Cabinet 4-5

INTERIOR:	Melamine	3/4"	EXTERIOR:	Red Oak Ply	3/4"
TOP TYPE:	1-1/2" Granite Tops		THICKNESS:	1 1/2	
DOOR STYLE:	LIVERF		OPENING #	Drawer Opening Height	
DRAWER STYLE:	PWSLABDR.DAT		A:	6	
DEPTH:	21				

BODIES

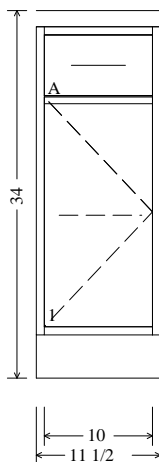
- (2) 4 x 18 1/2 Nailers
- (2) 21 x 28 1/2 Wall Base Sides
- (1) 20 x 18 1/2 Bottom
- (1) 7 1/2 x 18 1/2 False Front Back
- (1) 18 15/16 x 28 7/16 Back Panel

DOORS LIVERF PULL(S): Door Pull HINGE(S): Salice 120 clip

Opening #	Finished Size (WxH)	Panels (WxH)
1	1) 18 1/2 x 20 7/8	1) 18 1/2 x 20 7/8

DRAWERS PULL(S): Drawer Pull SLIDES:

Opening #	Finished Size (WxL)	Fronts (WxL)	Sides (WxL)	Ends (WxL)	Bottoms (WxL)
A	1) 6 x 18 1/2	1) 6 x 18 1/2			



Base Cabinet 4-6

INTERIOR: Melamine 3/4" EXTERIOR: Red Oak Ply 3/4"  
 TOP TYPE: 1-1/2" Granite Tops THICKNESS: 1 1/2"  
 DOOR STYLE: LIVERF OPENING # Drawer Opening Height  
 DRAWER STYLE: PWSLABDR.DAT A: 6  
 DEPTH: 21

BODIES			MOUNTING HOLES				Bottom Lip	
-----			Section	#	Item Reference	Center Lines	Mounting Holes	Reference
(2)	4	x 10	Nailers					
(2)	21	x 28 1/2	Wall Base Sides					
(1)	20	x 10	Bottom	1-1	Drawer A Bottom		23 7/8 in.	1/8
(1)	19 5/8	x 9 3/4	Adjustable Shelf					
(1)	10 7/16	x 28 7/16	Back Panel					
(1)	4	x 10	Stretcher					
(2)	4	x 10	Top Stretchers					

DOORS LIVERF PULL(S): Door Pull HINGE(S): Salice 120 clip

Opening #	Finished Size (WxH)		Panels (WxH)	
1	1) 10	x 20 7/8	1) 10	x 20 7/8

DRAWERS PULL(S): Drawer Pull SLIDES: 18" Dynaslide

Opening #	Finished Size (WxL)		Fronts (WxL)		Box (HxWxL)	
A	1) 6	x 10	1) 6	x 10	1) 5	x 8 15/16 x 18



Base Filler 4-7

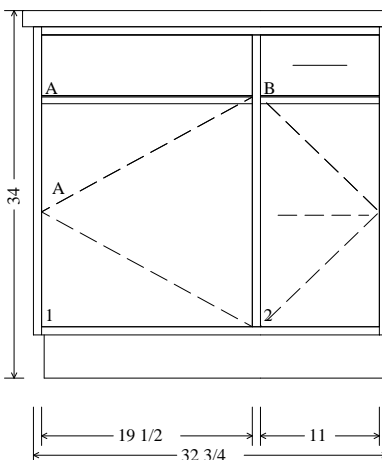
BASE FILLER

INTERIOR: Melamine 3/4"  
 TOP TYPE: 1-1/2" Granite Tops  
 DOOR STYLE: Liverpool JD  
 DRAWER STYLE: PWSLABDR.DAT  
 DEPTH: 21

EXTERIOR: Red Oak Ply 3/4"  
 THICKNESS: 1 1/2

BODIES

- 
- (1) 2 x 28 1/2 Filler
  - (1) 1 3/4 x 28 1/2 Filler Cleat



Base Cabinet 5-1

BASE

INTERIOR:	Melamine	3/4"	EXTERIOR:	Maple Ply	3/4"
TOP TYPE:	1-1/2" Granite Tops		THICKNESS:	1 1/2	
DOOR STYLE:	Liverpool JD		OPENING #	Drawer Opening Height	
DRAWER STYLE:	PWSLABDR.DAT		A:	5 5/16	
DEPTH:	21		B:	5 5/16	

BODIES

MOUNTING HOLES

BODIES			MOUNTING HOLES				Bottom Lip	
-----			Section	#	Item Reference	Center Lines	Mounting Holes	Reference
(2)	4	x 31 1/4	Nailers					
(2)	21	x 28 1/2	Wall Base Sides					
(1)	20	x 31 1/4	Bottom	1-2	Drawer B Bottom		24 9/16 in.	7/16
(1)	20	x 27	Partition					
(1)	19 5/8	x 10 3/4	Adjustable Shelf					
(1)	31 3/4	x 28 1/2	Back Panel					
(1)	6 13/16	x 19 1/2	Stretcher					
(1)	4	x 11	Stretcher					
(2)	4	x 11 3/4	Top Stretchers					

DOORS

Liverpool JD

PULL(S): Door Pull

HINGE(S): Salice 120 clip

Opening #	Finished Size (WxH)	Panels (WxH)
1	1) 20 7/16 x 22	1) 20 7/16 x 22
2	1) 11 15/16 x 22	1) 11 15/16 x 22

DRAWERS

Slab Drw Front

PULL(S): Drawer Pull

SLIDES:

Opening #	Finished Size (WxL)	Fronts (WxL)	Sides (WxL)	Ends (WxL)	Bottoms (WxL)
A	1) 20 7/16 x 6	1) 20 7/16 x 6			

DRAWERS	Slab Drw Front	PULL(S): Drawer Pull	SLIDES: 18" Dynaslide
Opening #	Finished Size (WxL)	Fronts (WxL)	Box (HxWxL)
B	1) 11 15/16 x 6	1) 11 15/16 x 6	1) 4 x 9 15/16 x 18





Base Filler 5-2

BASE FILLER

INTERIOR: Melamine 3/4"  
 TOP TYPE: 1-1/2" Granite Tops  
 DOOR STYLE: Liverpool JD  
 DRAWER STYLE: PWSLABDR.DAT  
 DEPTH: 21

EXTERIOR: Maple Ply 3/4"  
 THICKNESS: 1 1/2

BODIES

- 
- (1) 1 3/4 x 28 1/2 Filler Cleat
  - (1) 2 x 28 1/2 Filler

=====  
 JOB TOTALS  
 -----

3/4 Red Oak Ply	12.79	Sq. feet	1.65	21.10	0.40 Sheets
3/4 Solid Red Oak	3.76	Sq. feet	5.00	18.80	
1/4 Masonite	6.11	Sq. feet	0.45	2.75	0.19 Sheets
3/4 Particleboard	102.40	Sq. feet	0.75	76.80	3.10 Sheets
3/4 White Mel 2S	951.52	Sq. feet	0.85	808.79	29.16 Sheets
1/4 White Mel 1S	317.66	Sq. feet	0.65	206.48	9.62 Sheets
Red Oak Drw. Front	8.89	Sq. feet	11.90	105.79	
3/4 Maple Ply	139.69	Sq. feet	2.20	307.32	4.37 Sheets
1/4 Maple Ply	17.80	Sq. feet	0.76	13.53	0.56 Sheets
3/4 Solid Maple	30.09	Sq. feet	6.30	189.57	
Maple Drawer Front	10.33	Sq. feet	16.00	165.28	
3/4 White M1S Stretcher	17.93	Sq. feet	0.80	14.34	0.55 Sheets
Door Edge Band	18.02	Ln. feet	0.25	4.51	
Maple 5-Pc Drw	2.71	Sq. feet	16.00	43.36	
Streachers E/B	80.04	Ln. feet	0.25	20.01	
PVC E/B Tape	104.91	Ln. feet	0.25	26.23	
1/4 DBS Bottoms	94.69	Sq. feet	0.00	0.00	2.87 Sheets
1/2 DBS Sides	95.30	Sq. feet	0.00	0.00	2.89 Sheets
3/4 PB Stretcher EB	31.33	Sq. feet	0.75	23.50	0.95 Sheets
Match Exterior E/B Tape	493.10	Ln. feet	0.25	123.28	
Maple Liverpool	226.69	Sq. feet	14.15	3207.66	
3/4 Maple Ply Doors	12.00	Sq. feet	2.20	26.40	0.38 Sheets
Red Oak Liverpool	44.75	Sq. feet	11.90	532.52	
Red Oak Oslo	15.72	Sq. feet	20.00	314.40	
3/4 PB Sleepers	22.56	Sq. feet	0.75	16.92	0.68 Sheets
Maple Oslo	3.06	Sq. feet	20.00	61.20	
Alder Salzberg	0.40	Sq. feet	11.31	4.52	
Alder Salzberg Glass	133.40	Sq. feet	11.31	1508.75	
P-610 Custom	3.11	Ln. feet	3.00	9.33	
Confirmat	1542	Each	0.25	385.50	
Salice 120 clip	77	Pair	1.80	138.60	
Drawer Pull	20	Each	3.00	60.00	
Door Pull	66	Each	3.00	198.00	
14" Dynaslide	3	Pair	15.00	45.00	
16" Dynaslide	9	Pair	15.00	135.00	
18" Dynaslide	17	Pair	15.00	255.00	
22" Dynaslide	7	Pair	15.00	105.00	
Shelf Pins	216	Each	0.25	54.00	
28" Dynaslide	2	Pair	25.00	50.00	
Install Handles	92	Each	5.00	460.00	

 =====  
 9739.24